

Part number:

009-10061a

**HYDROMA**

HYDRAULICKÉ SYSTÉMY

**HIDROMA  
SYSTEMS**

UKŁADY HYDRAULICZNE

**HYDROMA**

ГИДРАВЛИЧЕСКИЕ СИСТЕМЫ

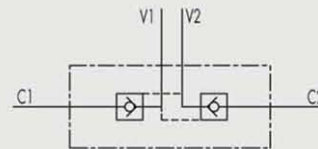
## 1.1 - VALVOLE DI BLOCCO PILOTATE A DOPPIO EFFETTO

## 1.1 - DOUBLE PILOT OPERATED CHECK VALVES

TIPO/TYPE  
VBPDE



SCHEMA IDRAULICO  
HYDRAULIC DIAGRAM



### IMPIEGO:

Valvola utilizzata per bloccare in posizione un cilindro in entrambi i sensi, consentendo il flusso in una direzione ed impedendolo in senso contrario fino a quando non viene applicata la pressione di pilotaggio.

### MATERIALI E CARATTERISTICHE:

**Corpo:** acciaio zincato.

**Componenti interni:** acciaio temprato termicamente e rettificato

**Guarnizioni:** BUNA N standard

**Tenuta:** a cono guidato. Non ammette trafilamenti.

### MONTAGGIO:

Collegare V1 e V2 all'alimentazione e C1 e C2 all'attuatore.

### A RICHIESTA:

- senza guarnizione OR sul pilota
- molla 1 Bar
- molla 8 Bar

### USE AND OPERATION:

Pilot check valves are used to block the cylinder in both directions. Flow is free in one direction and blocked in the reverse direction until pilot pressure is applied.

### MATERIALS AND FEATURES:

**Body:** zinc-plated steel.

**Internal parts:** hardened and ground steel.

**Seals:** BUNA N standard

**Poppet type:** any leakage.

### APPLICATIONS:

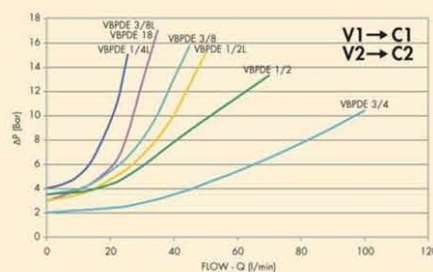
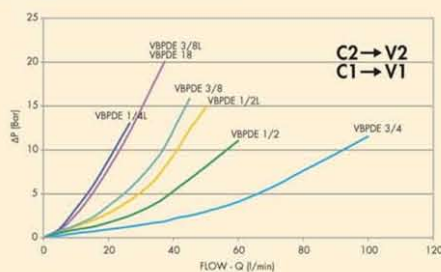
Connect V1 and V2 to the pressure flow and C1 and C2 to the actuator.

### ON REQUEST

- without seal on pilot piston
- 1 Bar spring
- 8 Bar spring

### PERDITE DI CARICO PRESSURE DROPS CURVE

Temperatura olio: 50°C - Viscosità olio: 30 cSt  
Oil temperature: 50°C - Oil viscosity: 30 cSt



Part number:

**009-10061b**

**HYDROMA**

HYDRAULICKÉ SYSTÉMY

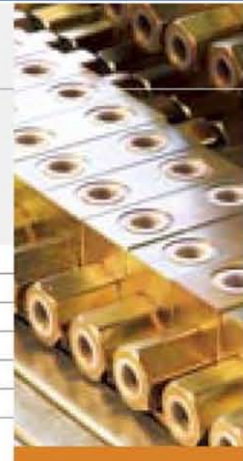
**HIDROMA  
SISTEMS**

UKŁADY HYDRAULICZNE

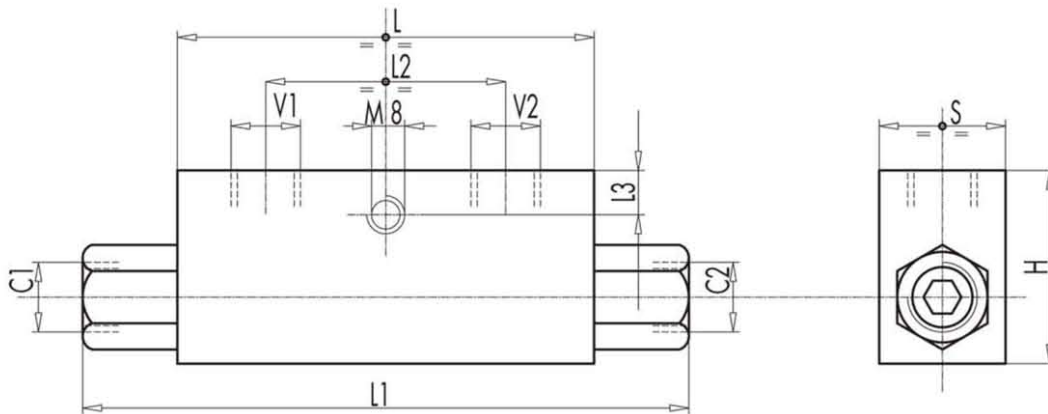
**HYDROMA**

ГИДРАВЛИЧЕСКИЕ СИСТЕМЫ

CODICE CODE	SIGLA TYPE	RAPP.PILOT. PILOT RATIO	PORTATA MAX MAX FLOW L./min.	PRESSIONE MAX MAX PRESSURE Bar	PRESSIONE APERTURA CRACKING PRESSURE Bar
<b>V0010</b>	VBPDE 1/4" L	1 : 5,5	20	350	4
<b>V0020</b>	VBPDE 3/8" L	1 : 5,5	35	350	3
<b>V0030</b>	VBPDE 1/2" L	1 : 5	50	350	3
<b>V0050</b>	VBPDE 3/8"	1 : 5	45	350	3,5
<b>V0060</b>	VBPDE 18	1 : 5	45	350	3,5
<b>V0070</b>	VBPDE 1/2"	1 : 4	70	350	3,5
<b>V0040</b>	VBPDE 3/4"	1 : 4	100	300	2



**DXF**



CODICE CODE	SIGLA TYPE	V1 - V2 C1 - C2	L	L1	L2	L3	H	S	PESO WEIGHT Kg
		GAS - MET							
<b>V0010</b>	VBPDE 1/4" L	G 1/4"	64	113	36	8	40	30	0,636
<b>V0020</b>	VBPDE 3/8" L	G 3/8"	80	128	38	8	40	30	0,736
<b>V0030</b>	VBPDE 1/2" L	G 1/2"	90	142	45	8	45	35	1,042
<b>V0050</b>	VBPDE 3/8"	G 3/8"	90	156	45	8	45	35	1,174
<b>V0060</b>	VBPDE 18	M18X1,5	90	156	45	8	45	35	1,156
<b>V0070</b>	VBPDE 1/2"	G 1/2"	80	144	40	18	60	35	1,284
<b>V0040</b>	VBPDE 3/4"	G 3/4"	100	192	46	8	60	40	1,916