

Part number:

009-10006a

**HYDROMA**

HYDRAULICKÉ SYSTÉMY

**HIDROMA  
SYSTEMS**

UKŁADY HYDRAULICZNE

**HYDROMA**

ГИДРАВЛИЧЕСКИЕ СИСТЕМЫ

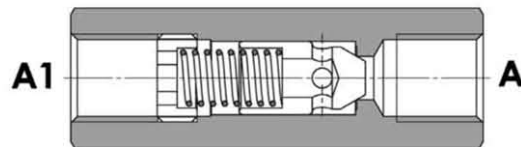
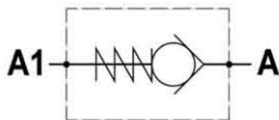
Tipo / Type

**FPR- \*- \***

Sez / Section

**D**

Valvola di ritegno unidirezionale  
Check valve



**SPECIFICHE TECNICHE**

**Materiali:** corpo in acciaio. L'otturatore conico guidato è in acciaio trattato termicamente. La superficie esterna è protetta mediante zincatura.

**Portata:** fino a 310 l/min

**Pressione max.:** 350 bar, vedasi tabella a parte

**Pressione di apertura:** standard 0,5 bar, a richiesta 2.5-5-10 bar

**TECHNICAL SPECIFICATIONS**

**Materials:** body is steel made. Guided poppet is in hardened steel. External surface is zinc plated.

**Rated flow:** up to 310 l/min

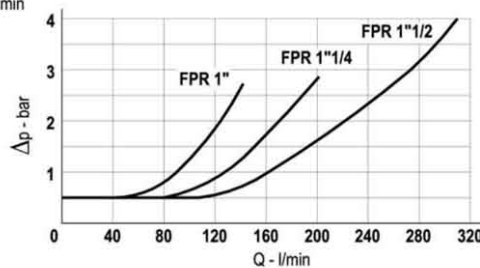
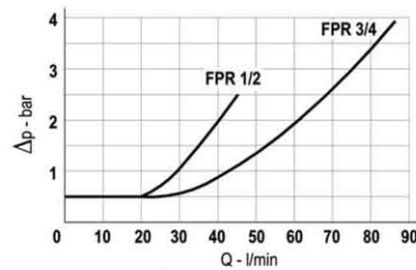
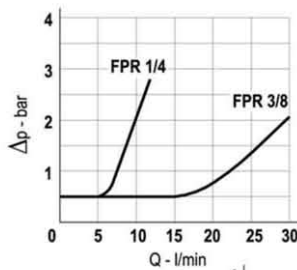
**Max. pressure:** 350 bar, see data sheet

**Cracking pressure:** 0,5 bar standard, on request: 2.5-5-10 bar

**DIAGRAMMA PERDITE DI CARICO - PRESSURE DROP CURVES**

Viscosità olio 24 mm<sup>2</sup>/sec. (3,5 °E)  
Temperatura 50 °C

Oil viscosity 24 mm<sup>2</sup>/sec. (3,5 °E)  
Temperature 50 °C



Part number:

**009-10006b**

**HYDROMA**

HYDRAULICKÉ SYSTÉMY

**HIDROMA  
SYSTEMS**

UKŁADY HYDRAULICZNE

**HYDROMA**

ГИДРАВЛИЧЕСКИЕ СИСТЕМЫ

Tipo / Type

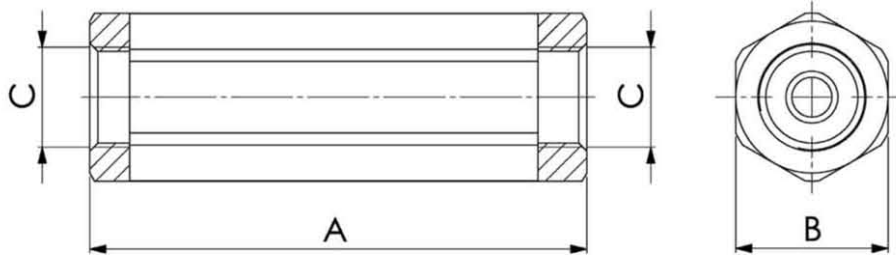
**FPR-\*.\***

Sez./Section

**D**

Valvola di ritegno unidirezionale

Check valve



TIPO TYPE	PORTATA MAX. MAX. FLOW	PRESSIONE MAX. MAX. PRESSURE	A	B	C	PESO WEIGHT
	L/MIN	BAR	mm	mm	BSPP	Kg
FPR 1/4"	12	350	62	19	1/4"	0,10
FPR 3/8"	30	350	68	24	3/8"	0,17
FPR 1/2"	45	320	78	27	1/2"	0,22
FPR 3/4"	85	300	88	36	3/4"	0,45
FPR 1"	140	250	112	46	1"	0,97
FPR 1" 1/4	200	250	145	55	1"1/4	1,68
FPR 1" 1/2	310	210	155	60	1"1/2	2,10

**ESEMPIO DI ORDINAZIONE – ORDERING CODE EXAMPLE**

FPR 1/4 2,5

Codice base  
Basic code

Connesioni  
Port Sizes

1/4 – 1/4" BSPP  
3/8 – 3/8" BSPP  
1/2 – 1/2" BSPP  
3/4 – 3/4" BSPP  
1 – 1" BSPP  
1 1/4 – 1 1/4" BSPP  
1 1/2 – 1 1/2" BSPP \*

Pressione apertura ritegno  
Cracking pressure  
Omettere se 0,5 bar  
Indicare se 2,5 – 5 -10 bar  
Omit if 0,5 bar  
\* Specify if 2,5 – 5 -10 bar