

Part number:

**HYDROMA**

HYDRAULICKÉ SYSTÉMY

**HIDROMA  
SYSTEMS**

UKŁADY HYDRAULICZNE

**HYDROMA**

ГИДРАВЛИЧЕСКИЕ СИСТЕМЫ

**HYDRAULIC OPERATED CARTRIDGE VALVES  
POPPET 2-WAY NORMALLY CLOSED**

**VOI-A2-NC-06**

**OD.75 - K - 56 - Y**

**DESCRIPTION - OPERATION**

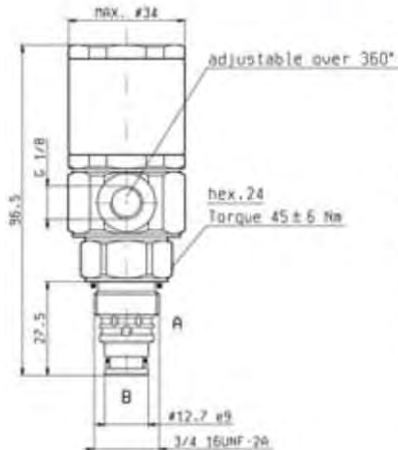
These hydraulic operated poppet style cartridge valves are particularly suitable to be used on trucks, on machinery operating under extreme weather conditions or anywhere electrical power is not available. They are designed with a modular construction allowing commonality of parts to produce a cost effective range and require a low operating pressure regardless of pressures and flows in the circuit.

**FEATURES - RATINGS**

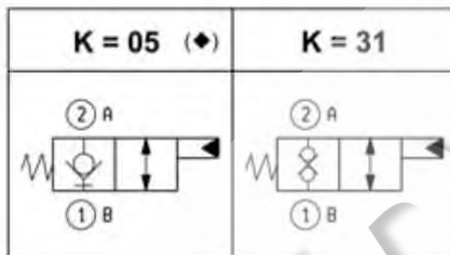
**Maximum Operating Pressure** **350 bar**

**Rated Flow** **40 l/min**

- Cavity - Tooling (page 7.01.10) : 018-E
- Weight : 0.265 kg
- Fluids - Temperatures - Testing Conditions - Seals : see page 7.01.04
- Internal Leakage : see page 7.01.04
- Filtration : 25 µm nominal or better, see page 7.01.05
- Mounting Position : unrestricted

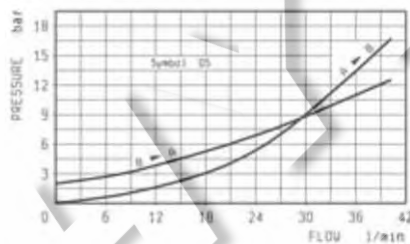


(♦) **IMPORTANT:** When valve is not operated, flow from B to A is not recommended due to high opening pressure.

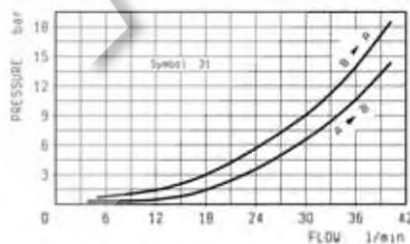


Y	OPERATING PRESSURE	
	MIN.	MAX.
14	2-3	15
34	15-20	50

**PRESSURE DROP**



**PRESSURE DROP**



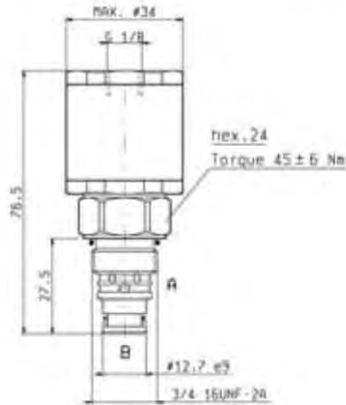
**HYDRAULIC OPERATED CARTRIDGE VALVES  
POPPET 2-WAY NORMALLY OPEN**

**VOI-A2-NA-06**

**OD.75 - K - 56 - Y**

**DESCRIPTION - OPERATION**

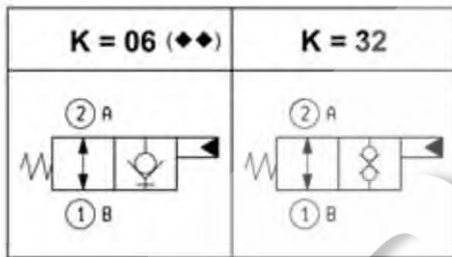
These hydraulic operated poppet style cartridge valves are particularly suitable to be used on trucks, on machinery operating under extreme weather conditions or anywhere electrical power is not available. They are designed with a modular construction allowing commonality of parts to produce a cost effective range and require a low operating pressure regardless of pressures and flows in the circuit.



**FEATURES - RATINGS**

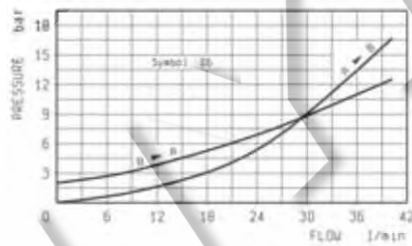
- |                                   |                 |
|-----------------------------------|-----------------|
| <b>Maximum Operating Pressure</b> | <b>350 bar</b>  |
| <b>Rated Flow</b>                 | <b>40 l/min</b> |
- Cavity - Tooling (page 7.01.10) : 018-E
  - Weight : 0.250 kg
  - Fluids - Temperatures - Testing Conditions - Seals : see page 7.01.04
  - Internal Leakage : see page 7.01.04
  - Filtration : 25  $\mu\text{m}$  nominal or better, see page 7.01.05
  - Mounting Position : unrestricted

(◆◆) **IMPORTANT:** Flow from B to A with operated valve is not recommended due to high opening pressure.

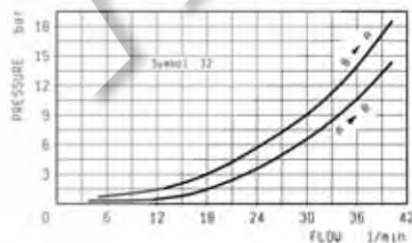


Y	OPERATING PRESSURE	
	MIN.	MAX.
14	2-3	15
34	15-20	50

**PRESSURE DROP**



**PRESSURE DROP**



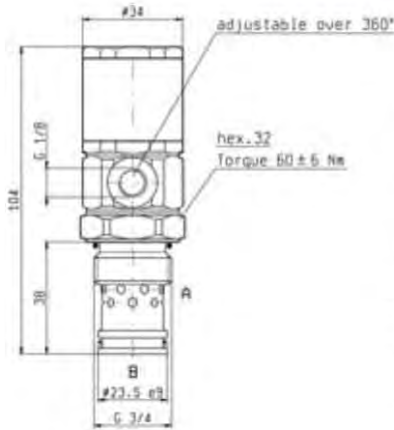
**HYDRAULIC OPERATED CARTRIDGE VALVES  
POPPET 2-WAY NORMALLY CLOSED**

**VOI-A2-NC-09**

**OD.75 - K - 04 - Y**

**DESCRIPTION - OPERATION**

These hydraulic operated poppet style cartridge valves are particularly suitable to be used on trucks, on machinery operating under extreme weather conditions or anywhere electrical power is not available. They are designed with a modular construction allowing commonality of parts to produce a cost effective range and require a low operating pressure regardless of pressures and flows in the circuit.



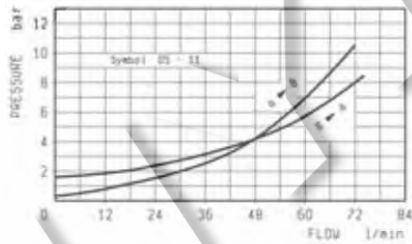
**FEATURES - RATINGS**

- Maximum Operating Pressure** 350 bar  
**Rated Flow** 70 l/min
- Cavity - Tooling (page 7.01.10) : 017-E
  - Weight : 0.360 kg
  - Fluids - Temperatures - Testing Conditions - Seals : see page 7.01.04
  - Internal Leakage : see page 7.01.04
  - Filtration : 25 µm nominal or better, see page 7.01.05
  - Mounting Position : unrestricted

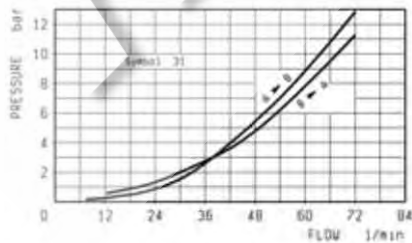
(♦) **IMPORTANT:** When valve is not operated, flow from B to A is not recommended due to high opening pressure.

	K = 05 (♦)	K = 11	K = 31	OPERATING PRESSURE	
				MIN. bar	MAX.
Y				14	15
				34	50

**PRESSURE DROP**



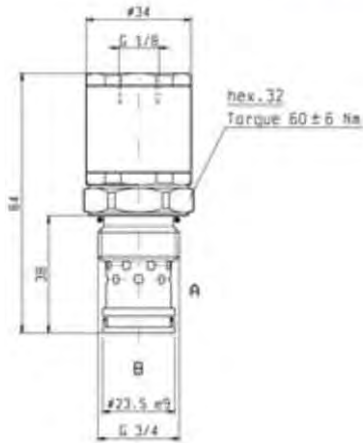
**PRESSURE DROP**



**HYDRAULIC OPERATED CARTRIDGE VALVES  
POPPET 2-WAY NORMALLY OPEN**

**VOI-A2-NA-09**

**OD.75 - K - 04 - Y**



**DESCRIPTION - OPERATION**

These hydraulic operated poppet style cartridge valves are particularly suitable to be used on trucks, on machinery operating under extreme weather conditions or anywhere electrical power is not available. They are designed with a modular construction allowing commonality of parts to produce a cost effective range and require a low operating pressure regardless of pressures and flows in the circuit.

**FEATURES - RATINGS**

**Maximum Operating Pressure** 350 bar

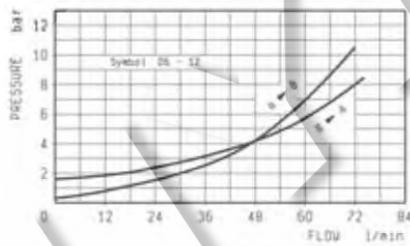
**Rated Flow** 70 l/min

- Cavity - Tooling (page 7.01.10) : 017-E
- Weight : 0.340 kg
- Fluids - Temperatures - Testing Conditions - Seals ; see page 7.01.04
- Internal Leakage : see page 7.01.04
- Filtration : 25 µm nominal or better, see page 7.01.05
- Mounting Position : unrestricted

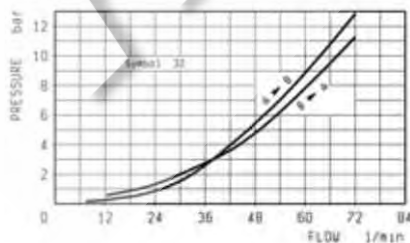
(◆◆) **IMPORTANT:** Flow from B to A with operated valve is not recommended due to high opening pressure.

	K = 06 (◆◆)	K = 12	K = 32	OPERATING PRESSURE	
				MIN. bar	MAX.
Y				2-3	15
14				15-20	50
34					

**PRESSURE DROP**



**PRESSURE DROP**



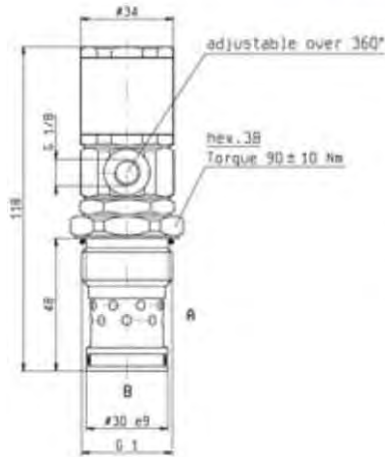
**HYDRAULIC OPERATED CARTRIDGE VALVES  
POPPET 2-WAY NORMALLY CLOSED**

**VOI-A2-NC-12**

**OD.75 - K - 05 - Y**

**DESCRIPTION - OPERATION**

These hydraulic operated poppet style cartridge valves are particularly suitable to be used on trucks, on machinery operating under extreme weather conditions or anywhere electrical power is not available. They are designed with a modular construction allowing commonality of parts to produce a cost effective range and require a low operating pressure regardless of pressures and flows in the circuit.



**FEATURES - RATINGS**

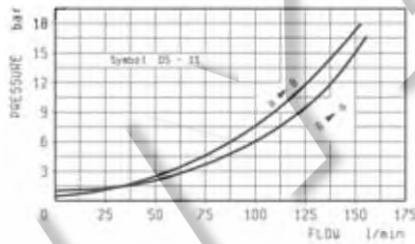
**Maximum Operating Pressure** 350 bar  
**Rated Flow** 150 l/min

- Cavity - Tooling (page 7.01.11) : 021-E
- Weight : 0.500 kg
- Fluids - Temperatures - Testing Conditions - Seals : see page 7.01.04
- Internal Leakage : see page 7.01.04
- Filtration : 25 µm nominal or better, see page 7.01.05
- Mounting Position : unrestricted

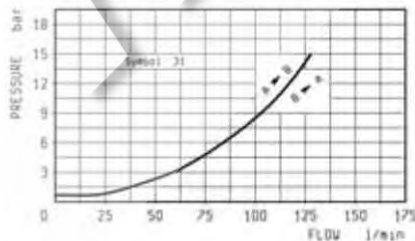
(♦) **IMPORTANT:** When valve is not operated, flow from B to A is not recommended due to high opening pressure.

	K = 05 (♦)	K = 11	K = 31	OPERATING PRESSURE	
				MIN. bar	MAX.
Y				2-3	15
14				15-20	50
34					

**PRESSURE DROP**



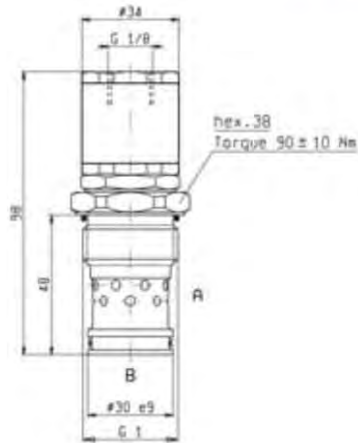
**PRESSURE DROP**



**HYDRAULIC OPERATED CARTRIDGE VALVES  
POPPET 2-WAY NORMALLY OPEN**

**VOI-A2-NA-12**

**OD.75 - K - 05 - Y**



**DESCRIPTION - OPERATION**

These hydraulic operated poppet style cartridge valves are particularly suitable to be used on trucks, on machinery operating under extreme weather conditions or anywhere electrical power is not available. They are designed with a modular construction allowing commonality of parts to produce a cost effective range and require a low operating pressure regardless of pressures and flows in the circuit.

**FEATURES - RATINGS**

**Maximum Operating Pressure** 350 bar

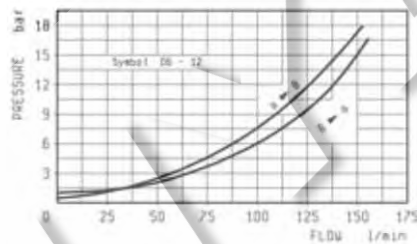
**Rated Flow** 150 l/min

- Cavity - Tooling (page 7.01.11) : 021-E
- Weight : 0.480 kg
- Fluids - Temperatures - Testing Conditions - Seals ; see page 7.01.04
- Internal Leakage : see page 7.01.04
- Filtration : 25 µm nominal or better, see page 7.01.05
- Mounting Position : unrestricted

(◆◆) **IMPORTANT:** Flow from B to A with operated valve is not recommended due to high opening pressure.

	<b>K = 06 (◆◆)</b>	<b>K = 12</b>	<b>K = 32</b>	<b>Y</b>	<b>OPERATING PRESSURE</b>	
					MIN.	MAX.
				<b>14</b>	2-3	15
				<b>34</b>	15-20	50

**PRESSURE DROP**



**PRESSURE DROP**

