

Part number:

HYDROMA

HYDRAULICKÉ SYSTÉMY

**HIDROMA
SYSTEMS**

UKŁADY HYDRAULICZNE

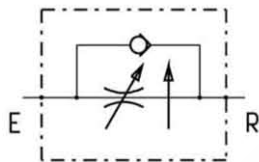
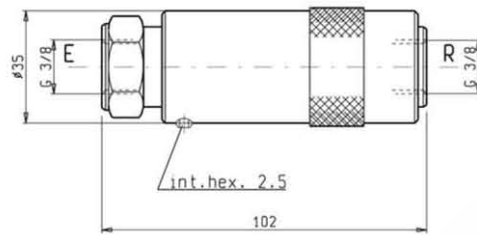
HYDROMA

ГИДРАВЛИЧЕСКИЕ СИСТЕМЫ

**FLOW CONTROL VALVES
IN LINE PRESSURE COMPENSATED FLOW REGULATORS**

VCD-RU-38

OE.22.01.04.02



DESCRIPTION - OPERATION

These simple pressure compensated valves are designed to control flow in meter-in, meter-out or bleed-off applications. The adjustment from zero to full flow is obtained rotating 200° approx. the outer sleeve.

FEATURES - RATINGS

Maximum Operating Pressure

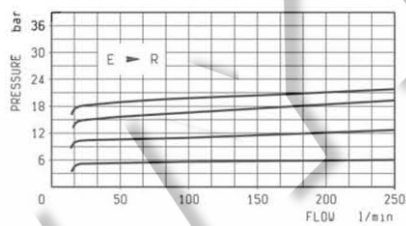
210 bar

Rated Flow

1 - 18 l/min

- Weight : 0.330 Kg
- Fluids - Temperatures - Testing Conditions - Seals : see page 7.01.04
- Flow range adjustment : from 15° to 200°
- Filtration : 25 μ m nominal or better, see page 7.01.05

PRESSURE DROP



PRESSURE DROP

