

Part number:

**006-10057**

**HYDROMA**

HYDRAULICKÉ SYSTÉMY

**HIDROMA  
SYSTEMS**

UKŁADY HYDRAULICZNE

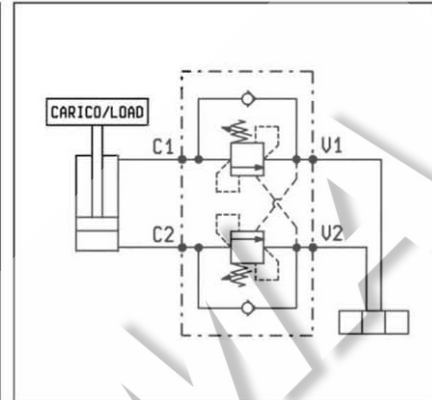
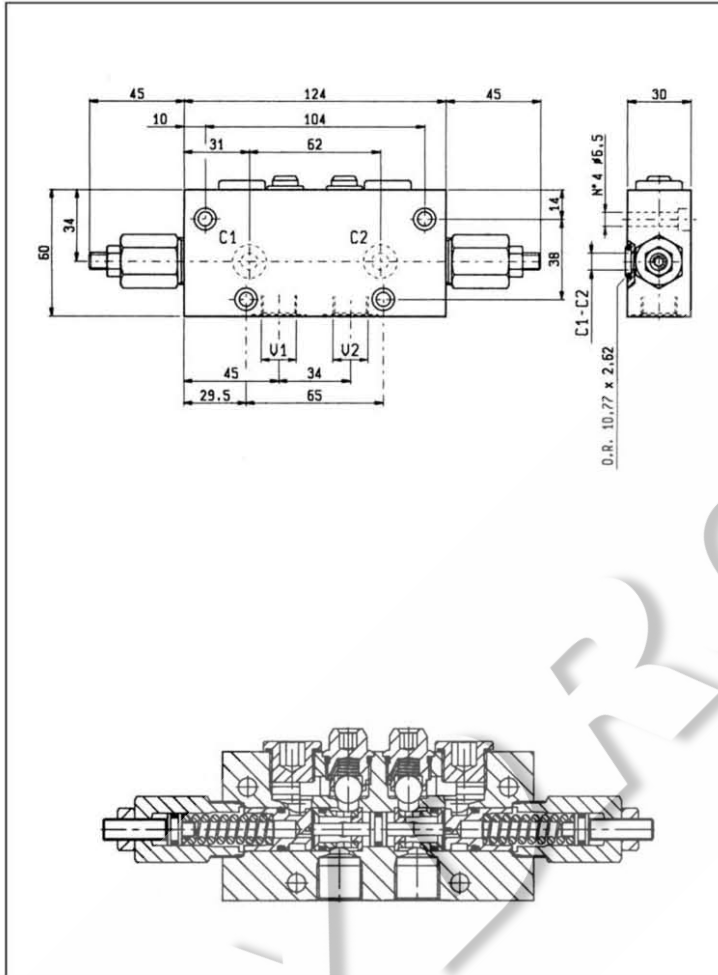
**HYDROMA**

ГИДРАВЛИЧЕСКИЕ СИСТЕМЫ

**BILANCIAMENTO, DOPPIO EFFETTO, SERIE "NN", FLANGIABILI  
DUAL PILOT ASSISTED, SERIES "NN", FLANGEABLE  
OVERCENTRE**

**VBSO-DE-NN-FCB**

**05.42.48 - X - Y - Z**



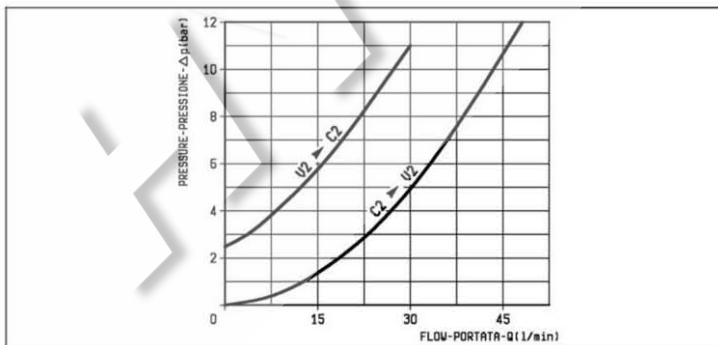
**DATI TECNICI / TECHNICAL DATA**

Pressione max.  
Max. pressure 350 bar

Portata max.  
Flow max. 40 l/min

Taratura della valvola: almeno 1.3 volte superiore alla pressione indotta dal carico  
Pressure setting: at least 1.3 times the load induced pressure

Peso  
Weight 0.75 kg



X	RAPPORTO DI PILOTAGGIO PILOT RATIO
03	6.6 : 1
10	2.9 : 1

Z	MOLLE / SPRINGS				Cod. ordinazione Ordering code	Colore Colour
	Campo taratura min - max bar Adj. press. range bar	Incremento press. bar / giro vite Press. increase bar / turn	Taratura standard bar (Q = 5 l/min) Std. setting bar (made at = 5 l/min)			
20	60-210	54	200	03.51.01.102	verde green	
35	120-350	118	350	03.51.01.116	giallo yellow	

Y	ATTACCHI / PORT SIZE	
	V1-V2	C1-C2
02	G 3/8	∅ 8

Marzo 99