

Part number:

**HYDROMA**

HYDRAULICKÉ SYSTÉMY

**HIDROMA  
SISTEMS**

UKŁADY HYDRAULICZNE

**HYDROMA**

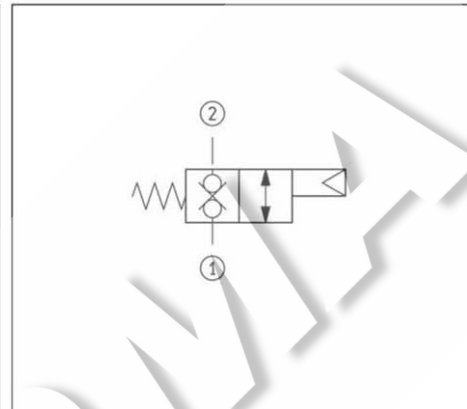
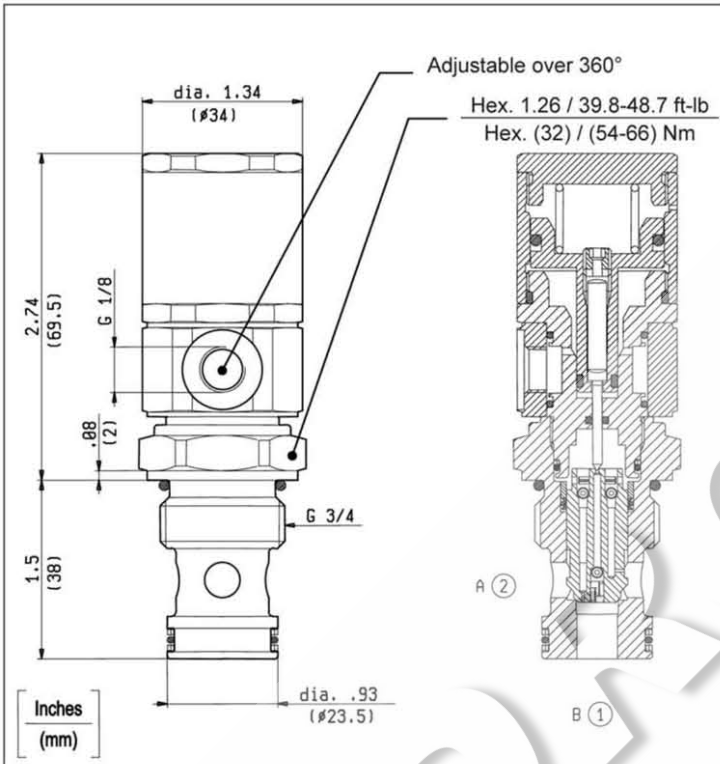
ГИДРАВЛИЧЕСКИЕ СИСТЕМЫ

**DIRECTIONAL CONTROL VALVES  
PNEUMATIC OPERATED POPPET 2-WAY DOUBLE LOCK  
NORMALLY CLOSED SPECIAL CAVITY**

**VPI-8A-2T-09-NC-S**

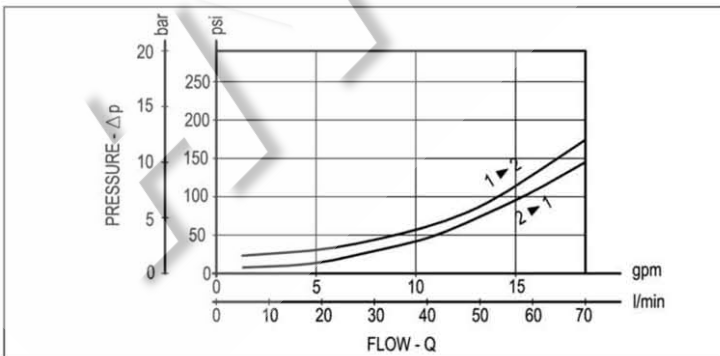
**017-E**

**OD.65.31.17.14.00**



**TECHNICAL DATA**

Maximum Operating Pressure	5000 psi (350 bar)
Rated Flow	19 gpm (70 l/min)
Cavity - Tooling (017-E)	page CT.S.006.U
Line bodies	page MN2.S...
Weight	0.794 lbs (0.360 kg)
Fluids - Temperatures	page 7.01.040
Testing Conditions - Seals	page 7.01.040
Internal Leakage	page 7.01.040
Filtration : 25 µm nominal or better	page 7.01.050
Mounting Position	unrestricted



<b>PILOT PRESSURE</b>		
MIN.	psi (bar)	MAX.
58 (4)		218 (15)