

Part number:

**HYDROMA**

HYDRAULICKÉ SYSTÉMY

**HIDROMA**  
SISTEMS

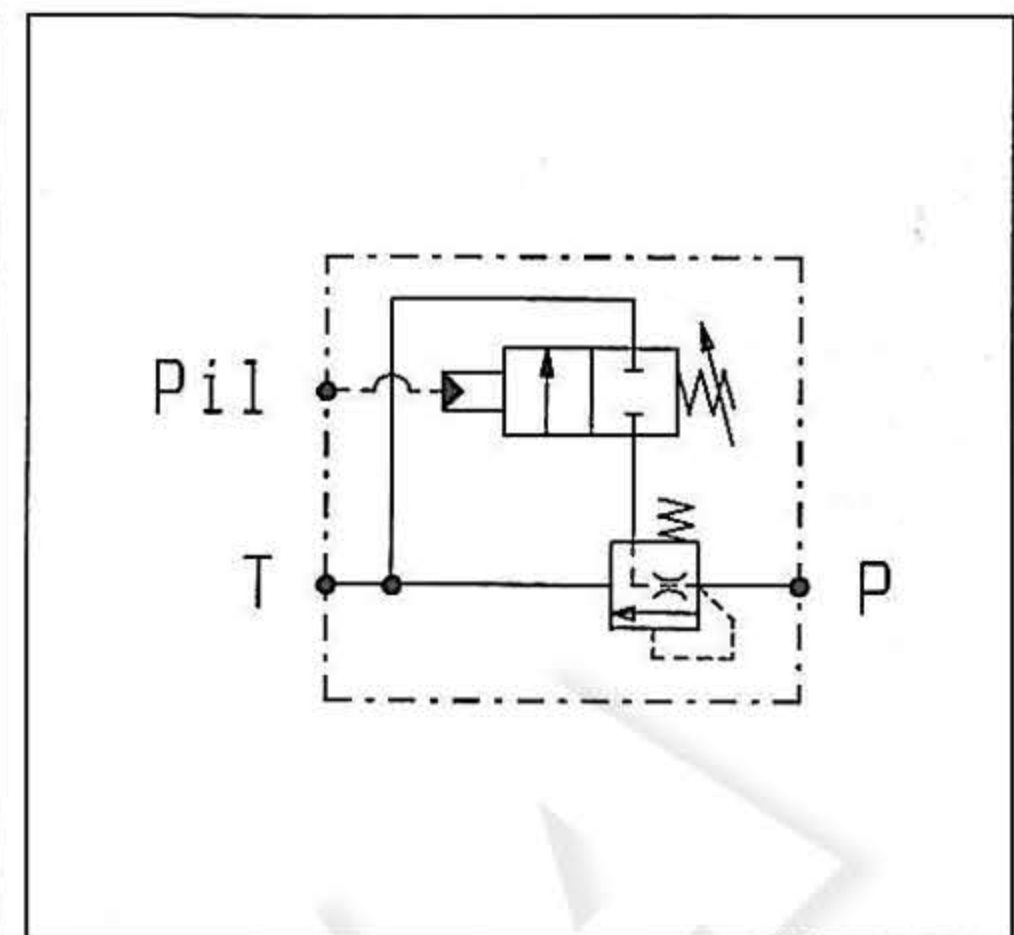
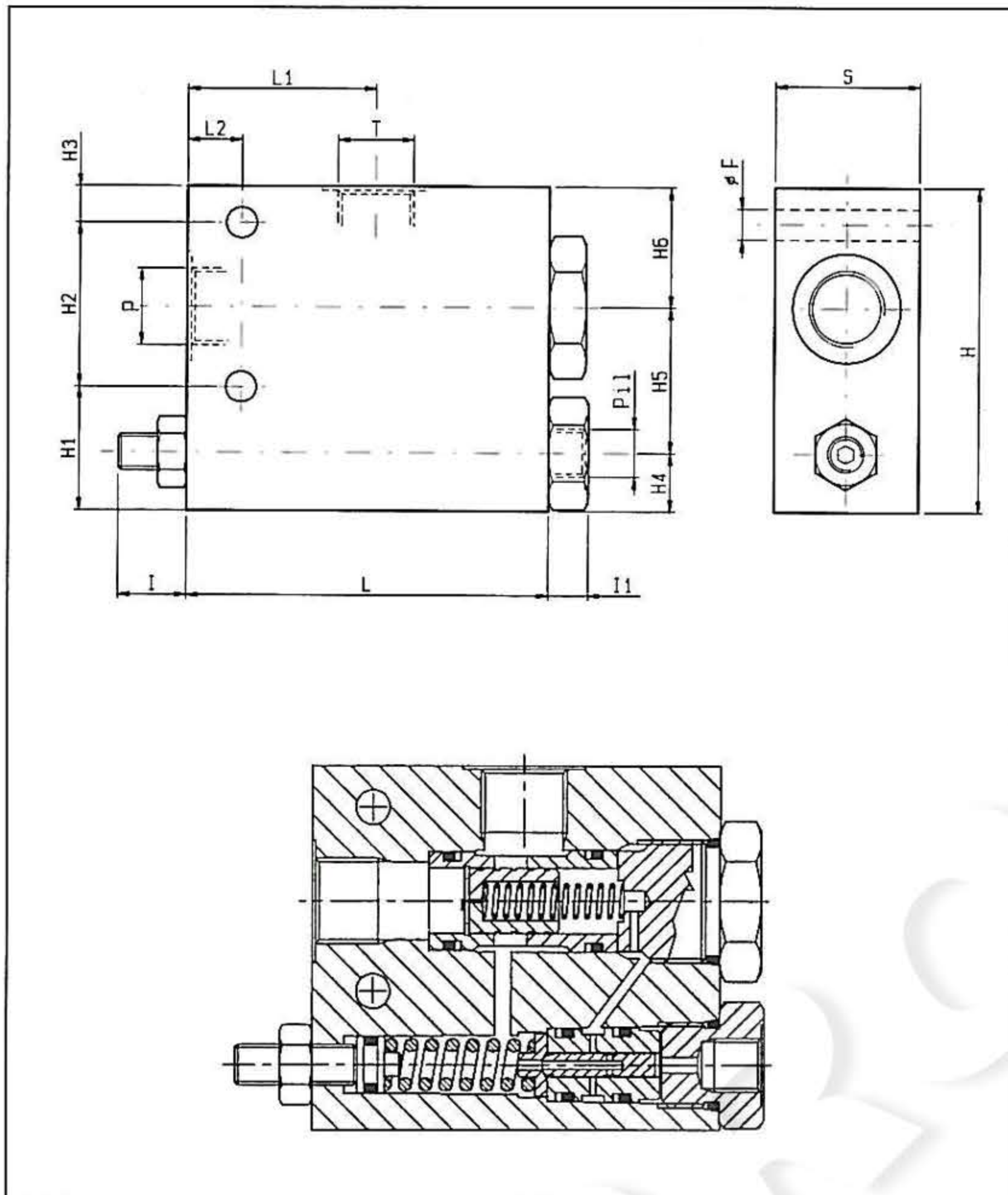
UKŁADY HYDRAULICZNE

**HYDROMA**

ГИДРАВЛИЧЕСКИЕ СИСТЕМЫ

**BM-N**

**05.93.04 - X - Y - Z**



**DATI TECNICI / TECHNICAL DATA**

Pressione di lavoro max. 300 bar  
Max. working pressure

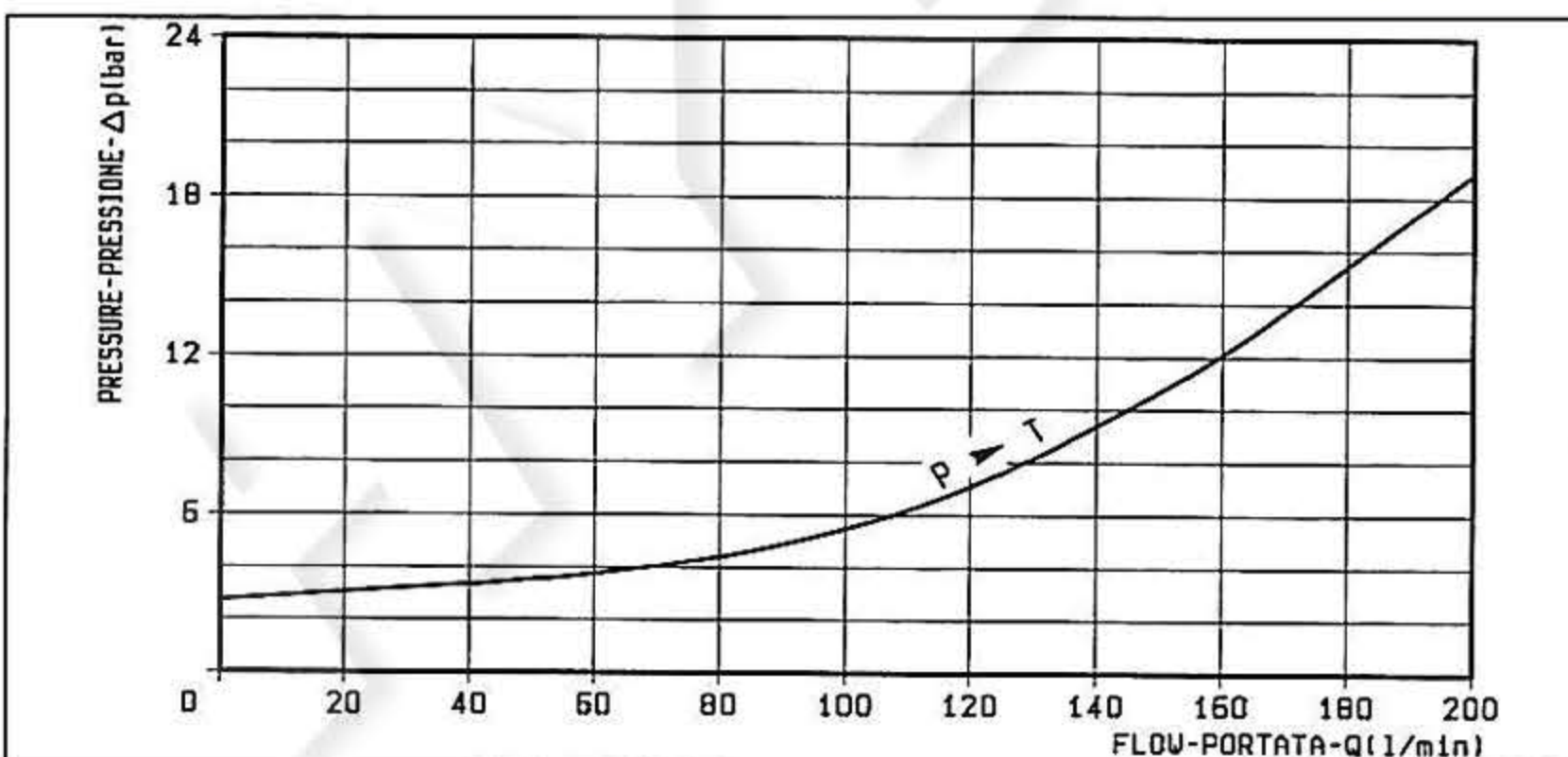
Portata max. vedi diagramma  
Flow see performance graph

Sono disponibili versioni speciali sia con attacco supplementare "VENT" per comando a distanza, che con comando meccanico. Contattare OIL CONTROL per maggiori dettagli. Special versions with additional VENT port for remote control, or for mechanical unloading are available. Please consult OIL CONTROL.

Classe di pulizia dell'olio: almeno 18/14 ISO 4406 (9 NAS-1638).

Fluid cleanliness class: 18/14 ISO 4406 (9 NAS-1638) or better

40	49	40	16	25	45	35	105	11	20	15	52	100	8.5		3/4	1.35
40	34	40	16	10	45	35	90	11	20	15	52	100	8.5		1/2	1.30
<b>S</b>	<b>H6</b>	<b>H5</b>	<b>H4</b>	<b>H3</b>	<b>H2</b>	<b>H1</b>	<b>H</b>	<b>I1</b>	<b>I</b>	<b>L2</b>	<b>L1</b>	<b>L</b>	<b>F</b>		<b>Y</b>	Peso kg Weight kg



<b>X</b>	<b>REGOLAZIONI ADJUSTMENTS</b>
<b>03</b>	vite esterna esagono incassato leakproof hex. socket screw 

<b>Z</b>	<b>MOLLE / SPRINGS</b>				
	Campo taratura min - max bar Adj. press. range bar	Incremento press. bar / giro vite Press. increase bar / turn	Taratura standard bar Std. setting bar	Cod. ordinazione Ordering code	Colore Colour
<b>05</b>	10-50	12	50	03.51.01.077	nero black
<b>10</b>	20-100	23.5	100	03.51.01.076	blu blue
<b>20</b>	50-200	47	200	03.51.01.075	verde green
<b>35</b>	100-300	83	300	03.51.01.059	giallo yellow

<b>Y</b>	<b>ATTACCHI / PORT SIZE</b>	
	P-T	PIL
<b>03</b>	G 1/2	G 1/4
<b>04</b>	G 3/4	G 1/4