

Part number:

009-10194a

HYDROMA

HYDRAULICKÉ SYSTÉMY

**HIDROMA
SYSTEMS**

UKŁADY HYDRAULICZNE

HYDROMA

ГИДРАВЛИЧЕСКИЕ СИСТЕМЫ

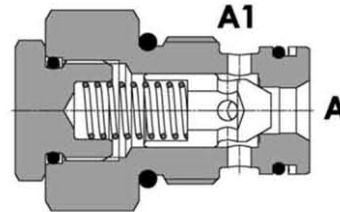
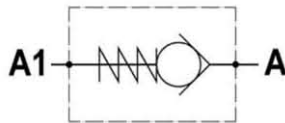
Tipo / Type

FPR C- *- *- *

Sez./Section

D

Valvola di ritegno unidirezionale, versione cartuccia
Check valve, cartridge version



SPECIFICHE TECNICHE

Materiali: corpo in acciaio. L'otturatore conico guidato è in acciaio trattato termicamente. La superficie esterna è protetta mediante zincatura.

Portata: fino a 70 l/min

Pressione max.: 350 bar

Pressione di apertura: standard 0,5 bar, a richiesta 2,5-5-10 bar

TECHNICAL SPECIFICATIONS

Materials: body is steel made. Guided poppet is in hardened steel. External surface is zinc plated.

Rated flow: up to 70 l/min

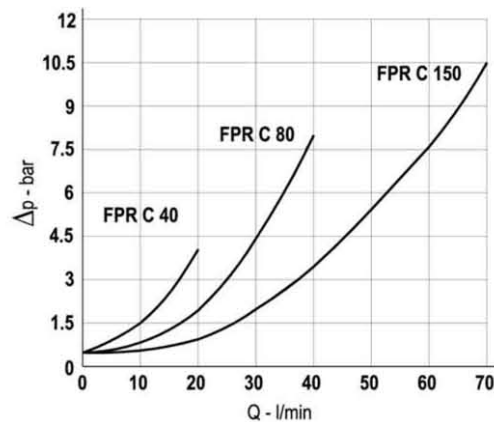
Max. pressure: 350 bar, see data sheet

Cracking pressure: 0.5 bar standard, 2.5-5-10 bar on request

DIAGRAMMA PERDITE DI CARICO - PRESSURE DROP CURVES

Viscosità olio 24 mm²/sec. (3,5 °E)
Temperatura 50 °C

Oil viscosity 24 mm²/sec. (3,5 °E)
Temperature 50 °C



Part number:

009-10194b

HYDROMA

HYDRAULICKÉ SYSTÉMY

**HIDROMA
SYSTEMS**

UKŁADY HYDRAULICZNE

HYDROMA

ГИДРАВЛИЧЕСКИЕ СИСТЕМЫ

Tipo / Type

FPR C- *- *- *

Sez./Section

D

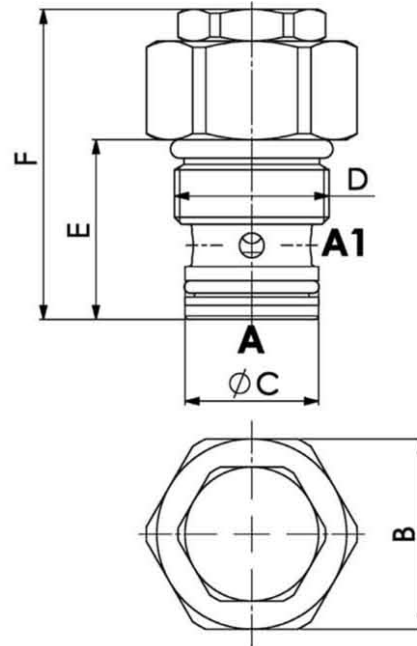
Valvola di ritegno unidirezionale, versione cartuccia
Check valve, cartridge version

COPPIA DI SERRAGGIO – INSTALLATION TORQUE

| Tipo - Type | Nm |
|-------------|-----------|
| FPR C 40 | 50 - 60 |
| FPR C 80 | 50 - 60 |
| FPR C 150 | 110 - 120 |

CAVITA' – CAVITY

| Tipo - Type | |
|-------------|-------|
| FPR C 40 | 22221 |
| FPR C 80 | 22222 |
| FPR C 150 | 22331 |



| TIPO TYPE | PORTATA MAX. MAX. FLOW | PRESSIONE MAX. MAX. PRESSURE | B | Ø C | D | E | F | PESO WEIGHT |
|--------------|---------------------------|---------------------------------|----|-----|---------|------|----|----------------|
| | l/min | bar | | | | | | Kg |
| FPR C 40 | 20 | 350 | 27 | 19 | M22x1.5 | 25.5 | 44 | 0.090 |
| FPR C 80 | 40 | 350 | 27 | 19 | M22x1.5 | 35.5 | 50 | 0.095 |
| FPR C 150 | 70 | 300 | 38 | 28 | M33x2 | 43 | 60 | 0.230 |

ESEMPIO DI ORDINAZIONE – ORDERING CODE EXAMPLE

