

Part number:

HYDROMA

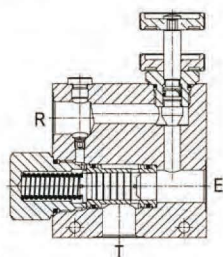
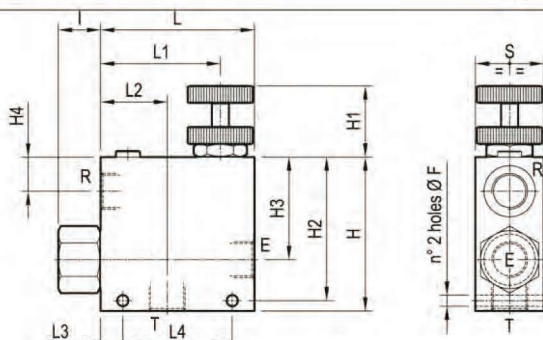
HYDRAULICKÉ SYSTÉMY

HIDROMA
SISTEMS

UKŁADY HYDRAULICZNE

HYDROMA

ГИДРАВЛИЧЕСКИЕ СИСТЕМЫ

**FLOW REGULATOR,
3-WAY, PRESSURE COMPENSATED****A-VRFC3****0M.C2.03 - X - Y**

mm (inches)

50 (1.97)	88 (3.47)	10 (0.39)	44 (1.73)	79 (3.11)	108 (4.25)	21 (0.83)	23 (0.91)	73 (2.87)	101 (3.98)	40 (1.58)	108 (4.25)	8.5 (0.34)	90 l/min 24 gpm	150 l/min 40 gpm	G 3/4	4.3 (9.5)
40 (1.58)	64 (2.52)	13 (0.51)	39 (1.54)	70 (2.76)	90 (3.54)	21 (0.83)	17.5 (0.69)	60 (2.36)	84 (3.31)	40 (1.58)	90 (3.54)	6.5 (0.26)	55 l/min 15 gpm	90 l/min 24 gpm	G 1/2	2.1 (4.6)
S	L4	L3	L2	L1	L	I	H4	H3	H2	H1	H	F	QR	QE	Y	Weight kg (lbs)

A constant flow rate, regardless of system pressures, is established from E to R, while a minimum pressure differential of appr. 5 bar (70 psi) exists between the two ports. Input flow supplied to E in excess of the regulated output at R is by-passed to T. Output flow can be varied from closed to the nominal maximum rating for the valve. Reverse flow from R to E is limited by the selected opening of the restrictor and is not pressure compensated. Flow from T to E or from T to R is not possible. Increasing or decreasing inlet flow may cause slight increase or decrease of Regulated flow.

TECHNICAL DATA

Max. operating pressure: 350 bar (5000 psi)

QE = Max inlet flow "E" port

QR = Max regulated flow "R" port

Steel body

Flow range adjustment: 0 - 3 turns

X**ADJUSTMENTS****70**

Handknob and locknut

**80**

Screw and locknut

**40**

Graduated handknob

**Y****PORT SIZE**

E - R - T

03

G 1/2

04

G 3/4

