

Part number:

## Single counterbalance, relief compensated

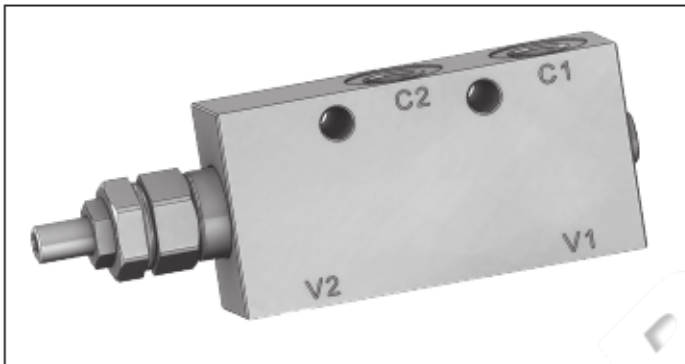
A-VBSO-SE-CC-30-PL

08.45.17 - X - Y - Z

**RE 18307-48**

Edition: 03.2016

Replaces: 07.2012



### Technical data

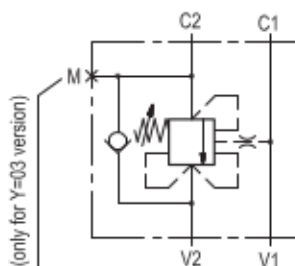
Max. operating pressure	410 bar (5945 psi)
Max. flow	60 l/min. (16 gpm)
Weight	see "Dimensions"
Manifold material	Zinc plated steel
Fluid	Mineral oil (HL, HLP) according to DIN 51524
Fluid temperature range	-30 °C to 100 (-22 to 212 °F)
Viscosity range	5 to 800 mm <sup>2</sup> /s (cSt)
Recommended degree of fluid contamination	Class 19/17/14 according to ISO 4406
MMTFd	150 years see data sheet 18350-51
Other technical data	see data sheet 18350-50
Relief setting:	at least 1.3 times the highest expected load.

Note: for applications outside these parameters, please consult us.

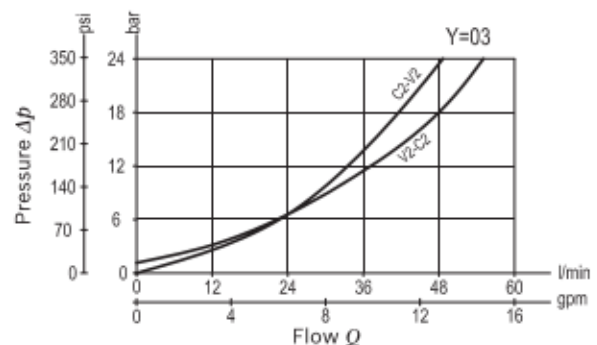
### Description

When pressure at V2 rises above the spring bias pressure, the check seat is pushed away from the piston and flow is allowed from V2 to C2. When load pressure at C2 rises above the pressure setting flow is relieved from C2 to V2. With pilot pressure at V1-C1, the pressure setting is reduced in proportion to the stated ratio of the valve, until opening and allowing flow from C2 to V2. The spring chamber is drained to V2. The valve applies a balanced piston design allowing relief operation at the valve setting independent of back-pressure at V2. However, the piloted opening of the valve remains subject to additive pressure at port V2.

Note: port identified with M are not protected with calibrated orifice but in direct connection with pressure channels.



### Characteristic curve



**Ordering code**

<b>08.45.17</b>	<b>X</b>	<b>Y</b>	<b>Z</b>
-----------------	----------	----------	----------

Single counterbalance,  
relief compensated

Pilot ratio

**03** 4.2 : 1

Port sizes	V1 - V2	C1 - C2	M
<b>02</b>	G 3/8	G 3/8	/
<b>03</b>	G 1/2	G 1/2	G 1/4

	SPRINGS		
	Adj. pressure range bar (psi)	Pres. increase bar/turn (psi/turn)	Std. setting Q=5 (l/min) bar (psi)
<b>20</b>	60-210 (870-3000)	75 (1088)	200 (2900)
<b>35</b>	100-350 (1450-5000)	165 (2393)	350 (5000)

Pressure setting up to 410 bar: code on request.

Tamper resistant cap code ordering code 11.04.23.003  
Mat. no. R930000754

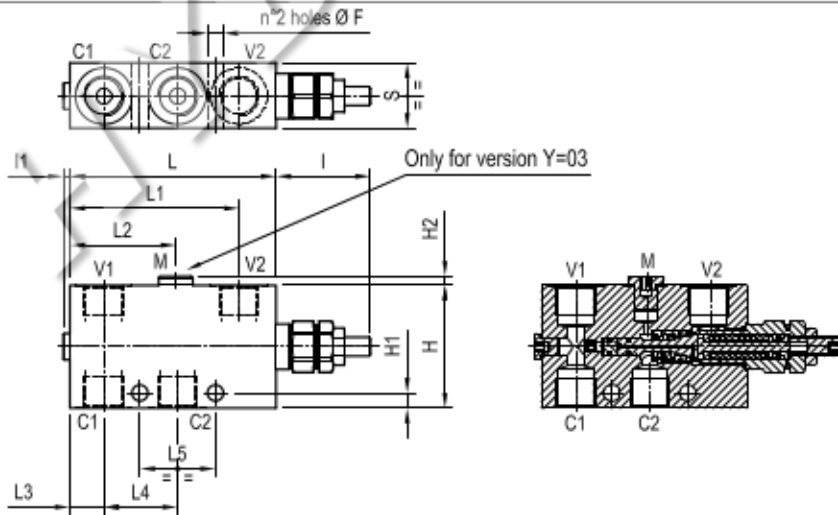


**Preferred types**

Type	Material number
08451703022000A	R930006858
08451703023500B	R930006857
08451703032000A	R930006921
08451703033500C	R930006922

Type	Material number

**Dimensions**



35	40	39.3	18	55.3	89.8	109	3.5	50	5	8	65	8.5			G 1/2	1.85
(1.38)	(1.58)	(1.55)	(0.71)	(2.18)	(3.54)	(4.29)	(0.14)	(1.97)	(0.2)	(0.32)	(2.56)	(0.34)				(4.08)
30	40	39.3	18	-	88.3	109	3.5	50	5	8	55	8.5			G 3/8	1.33
(1.18)	(1.58)	(1.55)	(0.71)	-	(3.48)	(4.29)	(0.14)	(1.97)	(0.2)	(0.32)	(2.17)	(0.34)				(2.93)
S	L5	L4	L3	L2	L1	L	I1	I	H2	H1	H	F			Y	Weight kg (lbs)