

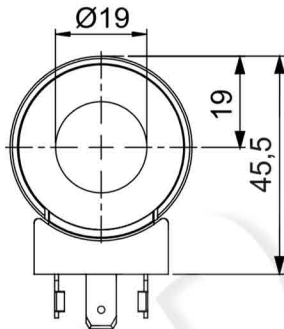
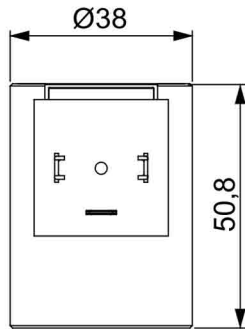
Part number:

CT-9800

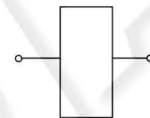
PROPORTIONAL COIL - TUBE Ø 19

36 W

- Wire insulation class. **H (>185°C)**
- ED. **100%**
- Coil power at 20° C. **36 W**
- Max current at 24 V dc. **0,9 A**
- Max current at 12 V dc **1,8 A**
- Ambient temperature **-20 +40° C**
- Weight. **0,28 Kg**



ELECTRIC CIRCUITS



STANDARD

270

CONNECTOR	PROTECTION CLASS	COIL THERMAL INSULATION CLASS	VOLTAGE [V]	RESISTANCE [Ω]	CIRCUIT	ORDERING CODE
DIN 43650	IP65*	H	12 V dc	3,9	STANDARD	098001190
DIN 43650	IP65*	H	24 V dc	14,5	STANDARD	098002190

* Protection index with standard connector