

Part number:

HYDROMA

HYDRAULICKÉ SYSTÉMY

**HIDROMA
SYSTEMS**

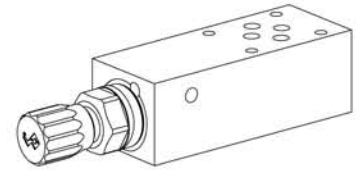
UKŁADY HYDRAULICZNE

HYDROMA

ГИДРАВЛИЧЕСКИЕ СИСТЕМЫ

**3-way flow control valve
Flange- and sandwich construction**

- Q_{max} = 42 l/min
- Q_{Nmax} = 40 l/min
- p_{max} = 350 bar

NG6
ISO 4401-03**DESCRIPTION**

Direct operated, pressure compensated flow control valve in flange- and sandwich construction. Flow control screw-in cartridges M22x1,5 acc. to ISO 7789 are installed. The flange body is painted, the sandwich plates and the outside parts are phosphatised. The solenoid is zinc coated.

FUNCTION

The 3-way flow control valve is designed to keep the oil flow to any actuator constant irrespective of the load.

APPLICATION

3-way flow control valves are used where the supply volume flow has to be kept constant even when the load fluctuates. Depending on the application, a distinction is made between restricting the forward flow or the return flow.

TYPE CODE

				Q	D	<input type="checkbox"/>	<input type="checkbox"/>	A06 -	<input type="checkbox"/>	-	<input type="checkbox"/>	#	<input type="checkbox"/>
Flow control valve													
3-way													
Type of adjustment	Key	<input type="checkbox"/>	S										
	Control knob	<input type="checkbox"/>	D										
	Cover	<input type="checkbox"/>	A										
Flange construction			<input type="checkbox"/>	F									
Sandwich construction			<input type="checkbox"/>	S									
International standard interface ISO, NG6													
Type list/Function	Flange construction A → B	<input type="checkbox"/>	A/B	Sandwich construction in P	<input type="checkbox"/>	P							
Nominal volume flow rate Q_N	12 l/min	<input type="checkbox"/>	12	25 l/min	<input type="checkbox"/>	25	40 l/min	<input type="checkbox"/>	40				
Design index (subject to change)													

GENERAL SPECIFICATIONS

Description	3-way flow control valve
Nominal size	NG6 acc. to ISO 4401-03
Construction	Flange- and sandwich construction
Mounting	4 holes for socket cap screws M5 or studs screws M5
Connection	Threaded connection plates Multi-flange subplate Longitudinal stacking system
Ambient temperature	-20...50 °C
Mounting position	any
Fastening torque	$M_D = 5,5$ Nm (Qual. 8.8) for fastening screws $M_D = 50$ Nm for screw-in cartridge
Weight:	• Flange type $m = 1,10$ kg
(without screw-in cartridge)	• Sandwich type $m = 1,30$ kg

HYDRAULIC SPECIFICATIONS

Fluid	Mineral oil, other fluid on request
Contamination efficiency	ISO 4406:1999, class 18/16/13 (Required filtration grade $\beta_{6...10} \geq 75$) see data sheet 1.0-50/2
Viscosity range	12 mm ² /s...320 mm ² /s
Fluid temperature	-20...+70 °C
Peak pressure	$p_{max} = 350$ bar
Min. volume flow	$Q_{min} = 0,1$ l/min (at $v = 30$ mm ² /s)
Max. volume flow	$Q_{max} = 42$ l/min
Control accuracy	≤ 1 %

SCREW-IN CARTRIDGES INSTALLED

The following screw-in cartridges are used in either the flange body or the sandwich body.

Type	Designation	Data sheet no.
QD.PM22	flow control valve •3-way	2.5-540



REMARK!

Detailed performance data and additional hydraulic specifications may be drawn from the data sheets of the corresponding installed pressure relief cartridge.

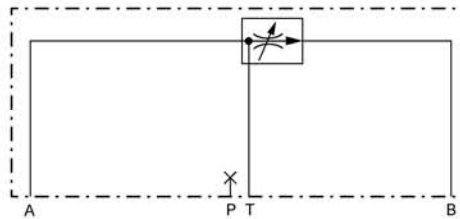


CAUTION!

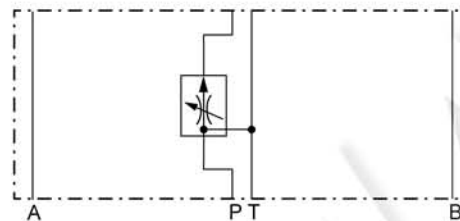
The performance data especially the «**pressure-flow-characteristic**» on the data sheets of the screw-in cartridges refer to the screw-in cartridges only. The additional pressure drop of the flange body respectively sandwich body must be taken into consideration.

TYPE CHARTS

QD.FA06-A/B

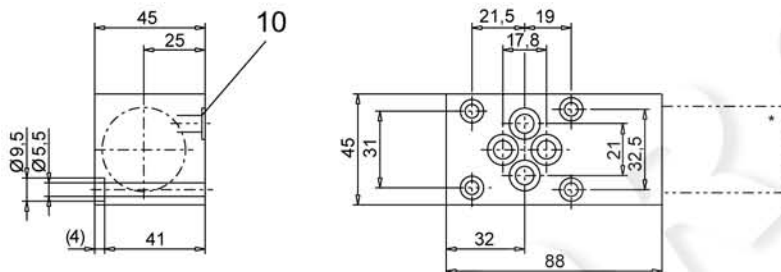


QD.SA06-P

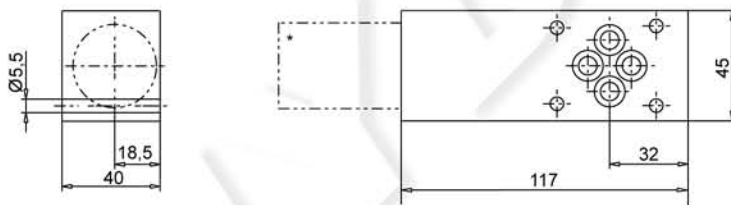


DIMENSIONS

Flange construction QD.FA06-A/B



Sandwich construction QD.SA06-P



* The total lengths depends on the cartridge type, see data sheet 2.5-540

PARTS LIST

Position	Article	Description
10	160.2093	O-ring ID 9,25 x 1,78 (NBR)

Technical explanation see data sheet 1.0-100