

Part number:

HYDROMA

HYDRAULICKÉ SYSTÉMY

**HIDROMA
SYSTEMS**

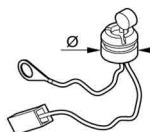
UKŁADY HYDRAULICZNE

HYDROMA

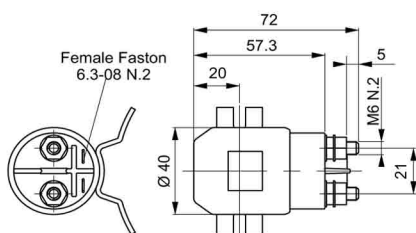
ГИДРАВЛИЧЕСКИЕ СИСТЕМЫ

M * ** (*) **C** /* - **Accessory: Thermal protection**

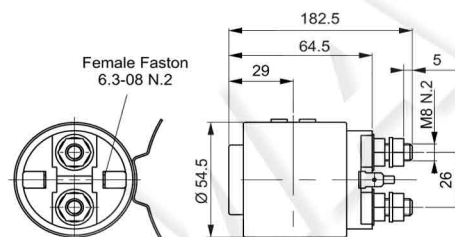
Thermal protection		
Code	Ø mm	For motors
90340009	16	M2EN - M4ES



M * ** (*) **B** /* - **Accessory: Starting switch**



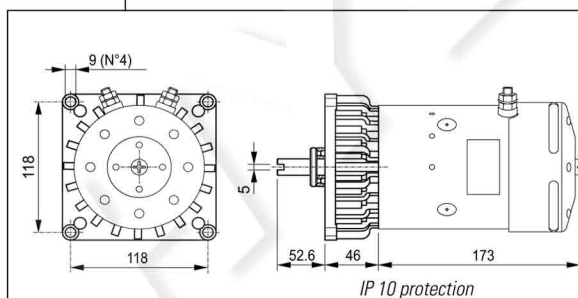
120A starting switch		
Code (•)	VDC	For motors
KIT07012.027	12	M2GA - M2GC
KIT07012.032	24	M4GB - M4GD
KIT07012.033	12	M2AA
KIT07012.034	24	M4AB
KIT07012.025	12	M2EN - M2GN
KIT07012.026	24	M4ES - M2GP



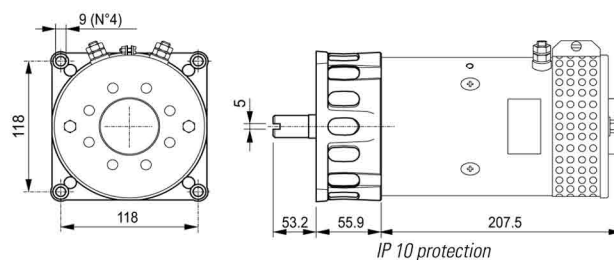
150A starting switch		
Code (•)	VDC	For motors
KIT07012.019	24	M4FB - M4GJ

(•) Complete kit with all assembly components.

M * ** (*) ***** /* - **Accessory: Ventilation (motor included)**



*	Code (•)	VDC	For motors
D	KIT09008.061	12	M2AA
G	KIT09008.062	12	M2AA + thermal protection
D	KIT09008.031	24	M4AB
G	KIT09008.063	24	M4AB + thermal protection



*	Code (•)	VDC	For motors
D	KIT09008.029	24	M4FB

(•) Complete kit with all assembly components (motor, transmission kit, etc).