

Part number:



**HYDROMA**

HYDRAULICKÉ SYSTÉMY

**HIDROMA  
SYSTEMS**

UKŁADY HYDRAULICZNE

**HYDROMA**

ГИДРАВЛИЧЕСКИЕ СИСТЕМЫ

Solenoid operated valves pilot operated poppet type  
2-way normally closed  
Special cavity, 004

VEI-16-NC\_004

OD.15.03.04 - Y - Z

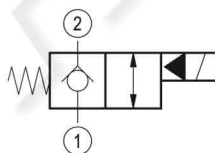
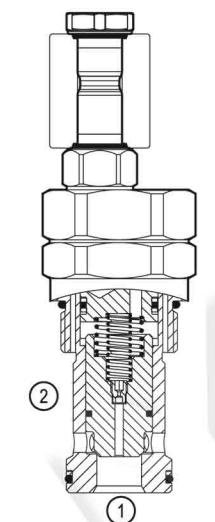
**RE 18323-30**

Edition: 04.2018

Replaces: 11.2017



**PATENT PENDING**



#### Technical data

New VEI-16 family incorporates a new solenoid concept providing excellent performance and enables cartridges to work in severe environment. Cartridges also incorporates advanced design of hydraulic parts providing excellent hydraulic performance.

#### Technical data

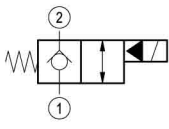
General		
Weight		1.13 kg (2.5 lbs)
Installation orientation		Optional
Ambient temperature range		-30 to 90 °C (-22 to 194 °F)
Hydraulic		
Max. operating pressure		350 bar (5000 psi)
Max. proof pressure		420 bar (6000 psi)
Rated flow		260 l/min (69 gpm)
Fatigue cycle life		1 million cycles at 350 bar
Max. internal leakage		20 drops/min.
Fluid temperature range		-20 to 80 °C (-4 to 176 °F)
Fluids: Mineral-based or synthetics with lubricating properties at viscosities of 20 to 380 mm <sup>2</sup> /s (cSt)		
Installation torque		110 - 130 Nm (81 - 96 ft-lbs)
Recommended degree of fluid contamination		Nominal value max. 25 µm (NAS 8) ISO 4406 19/17/14
Special cavity		004 see 18325-75
Lines bodies and standard assemblies	Please refer to section "Hydraulic integrated circuit" or consult factory	
Seal kit	code	RG0004020520100
	material no.	R930001696
Seal kit coil and standard cap	code	RG02Z0010000100
	material no.	R930067869
Other technical data		See data sheet 18350-50
Electrical		
Type of voltage		DC voltage
Coil type		D36 see 18325-90
Supply voltage		See data sheet 18325-90
Voltage tolerance against ambient temperature		See characteristic curve
Power consumption		20 W
Duty cycle coil		See characteristic curves %
Type of protection		See data sheet 18325-90
Note: Coils must be ordered separately		

**Ordering code**

<b>OD.15</b>	<b>03</b>	<b>04</b>	<b>Y</b>	<b>Z</b>	<b>0000</b>	<b>*</b>
--------------	-----------	-----------	----------	----------	-------------	----------

Solenoid operated valves  
pilot operated poppet type  
2-way normally closed

monodirectional type



**03**

Series 0/A to L  
unchanged performances and dimensions

0 = With buna seal  
V = With Viton seal

A = Standard  
D = Knob style manual override

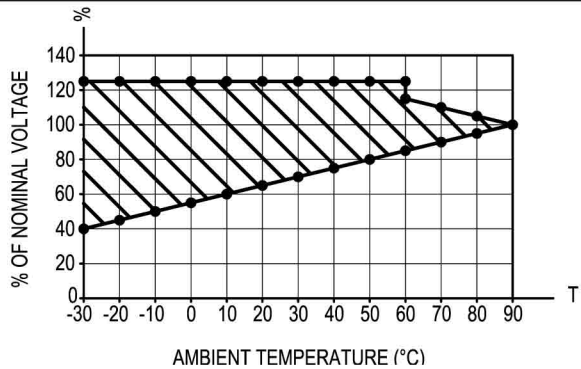
Special cavity: 004

Type	Material number
OD150304A000000	R930064807
OD150304D000000	R930064862

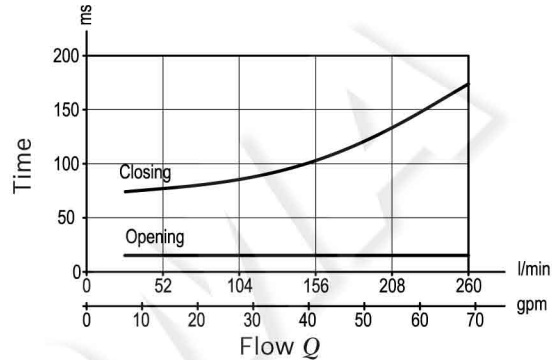
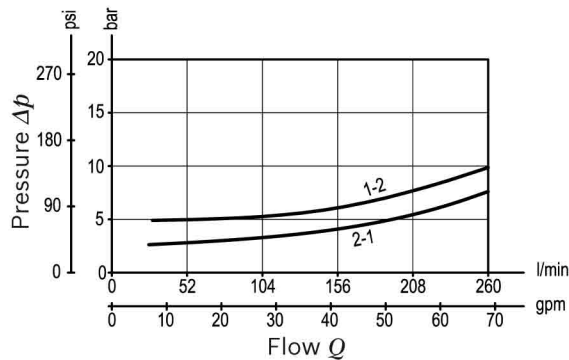
Type	Material number

Characteristic curves

All Versions - Admissible supply voltage Vs. Ambient temperature at 100% duty cycle



Version 03



**Dimensions****Solenoid operated valves, poppet 2-way  
normally closed**