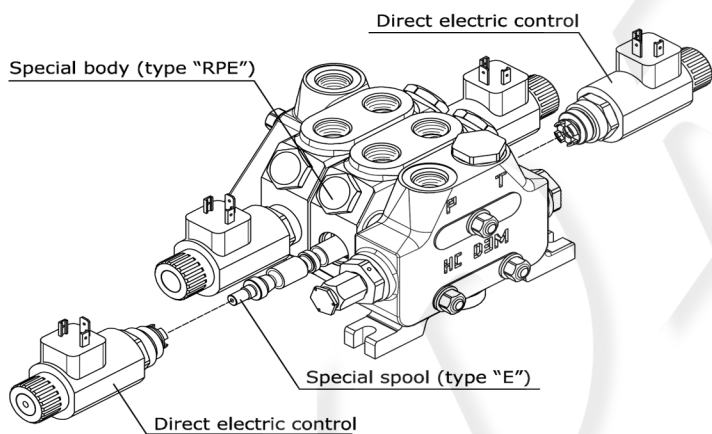


Part number:

Direct electrical control classification

The ON-OFF electric control D3M control valve is suitable for all mobile applications and in particular for agricultural harvesting machines, gardening machines and small-sized dumpers. This actuation system is also recommended for earth moving and lifting machinery applications; in particular, it enables to remote-control truck mounted crane and aerial platform stabilizers.

code	description	dimensions
H036 leave out the spool return action code	Direct electric control 12 Vdc (45W - 3 A)	
H037 leave out the spool return action code	Direct electric control 24 Vdc (45W - 1,5 A)	



Direct electric control specifications

Type	HC-D3M	
Rated voltage	12 VDC	24 VDC
Rated current	3 A	1,5 A
Rated power	36 W	
Permitted working voltage	±10% Nominal	
Max ambient temperature	+40°C	
Max oil temperature	+80°C	
Operation time	S1 (100%)	
Protection degree	IP65	
Insulation degree	H	
Standard connector	DIN 43650	
Spool stroke	2,8 + 2,8 mm	

The H036 and H037 direct electric controls come as two kits each including a: coil, spring, solenoid and adapter. The H036 and H037 electric controls use a type E special spool and a type special body. The ON-OFF Electric Control kit includes a manually operated emergency push-button.

Operating limit curve

Data detected after voltage decrease equal to 28% of the rated value (conditions occurring with coil under stabilization temperature conditions with rated voltage reduced by 10%).

