

Part number:

**HYDROMA**

HYDRAULICKÉ SYSTÉMY

**HIDROMA  
SYSTEMS**

UKŁADY HYDRAULICZNE

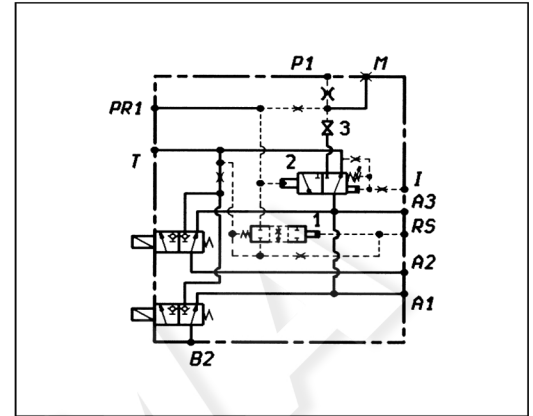
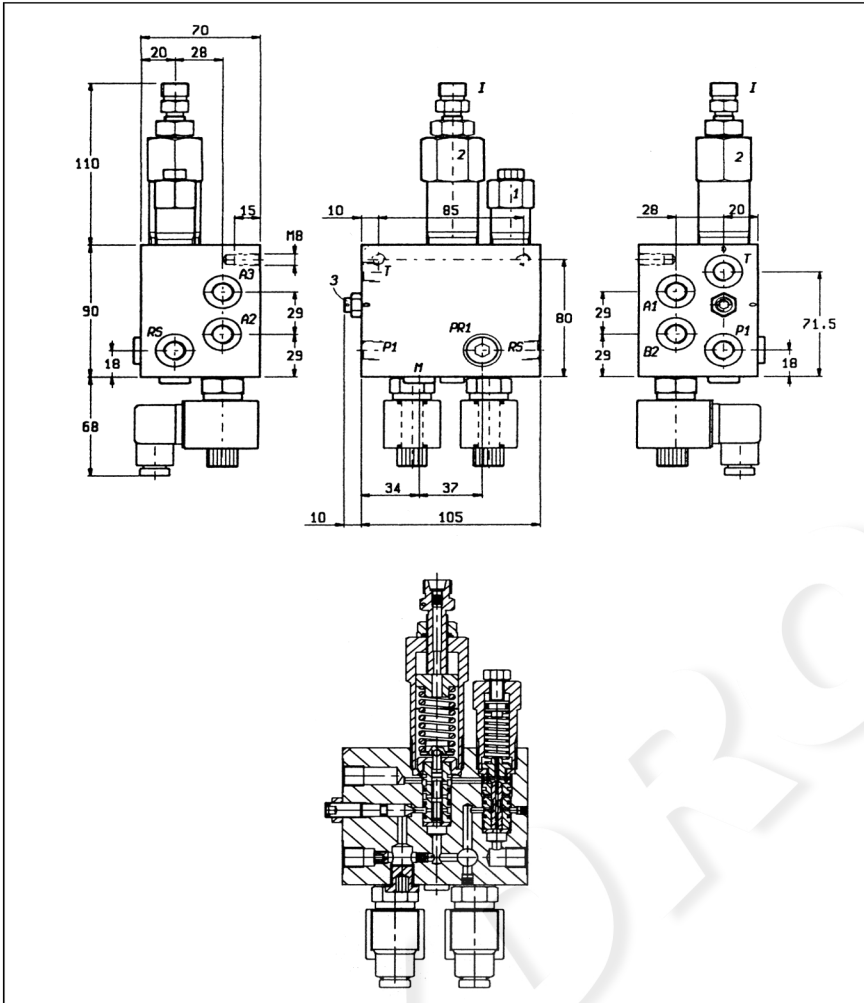
**HYDROMA**

ГИДРАВЛИЧЕСКИЕ СИСТЕМЫ

**SENSORI COMBINATI DI PRESSIONE LIMITE  
SEQUENCE ASSEMBLY FOR LOAD LIMITING SYSTEMS**

**LM2E-IPRPF**

**07.08.7050**



**DATI TECNICI / TECHNICAL DATA**

Pressione di lavoro max. 350 bar  
Max. working pressure 350 bar

Tensione nominale 24 V (DC)  
Nominal voltage 24 V (DC)

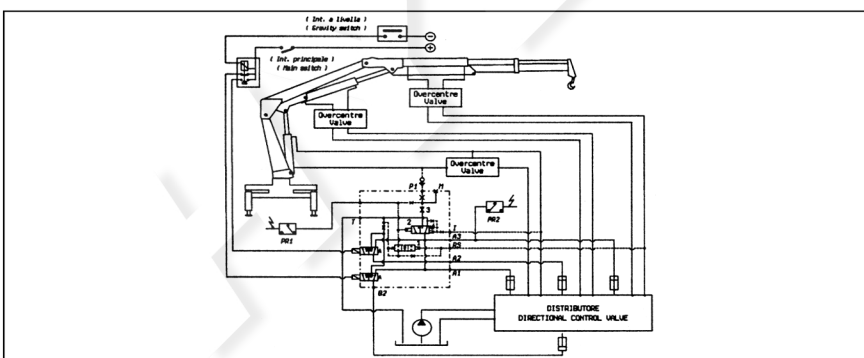
Peso 1.8 kg  
Weight 1.8 kg

PR1 = pressostato di avviso 90% carico max.  
PR1 = pressure switch monitoring 90% max. load

PR2 = pressostato di allarme per sovraccarico  
PR2 = pressure switch overload warning

La linea "RS" serve per ridurre l'isteresi del limitatore idraulico senza inibirlo.  
"RS" port for hysteresis reduction without inhibition

Si consiglia la piombatura delle valvole 2 e 3 dopo la taratura.  
It is recommended to lock valves 2 and 3 after setting



VALVOLA VALVE	MOLLE / SPRINGS				
	Campo taratura min - max bar Adj. press. range bar	Incremento press. bar / giro vite Press. increase bar / turn	Taratura standard bar (Q = 5 l/min) Std. setting bar (Q = 5 l/min)	Cod. ordinazione Ordering code	Colore Colour
2	80-350	18	280		

ATTACCHI / PORT SIZE	
I	A1-A2-A3-B2-P1-T-M-RS-PR1
M16X1.5	G 1/4