

Part number:

HYDROMA

HYDRAULICKÉ SYSTÉMY

**HIDROMA
SYSTEMS**

UKŁADY HYDRAULICZNE

HYDROMA

ГИДРАВЛИЧЕСКИЕ СИСТЕМЫ

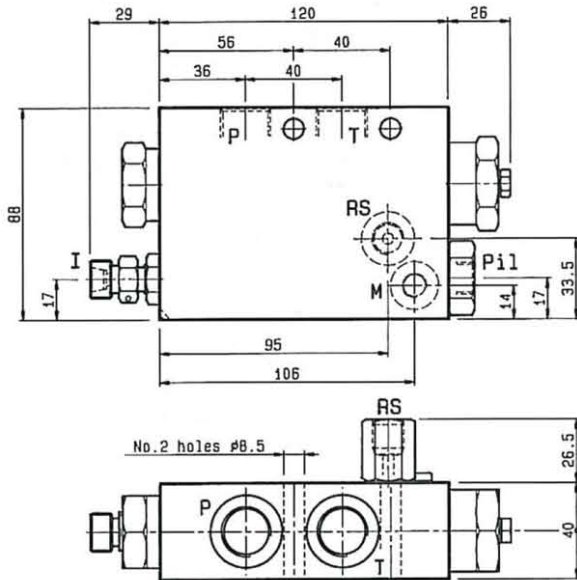
PILOT OPERATED UNLOADING VALVES

006 10821

LM-RID-I

05.93.20 - X - Y - Z

DENOMINAZIONE VALVOLA
VALVE DENOMINATION

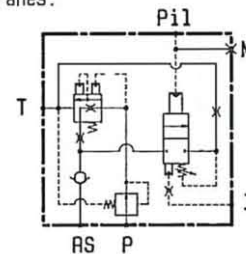


CODICE D'ORDINAZIONE
ORDERING CODE

These valves unload to tank the pump flow when the pre-set pilot pressure is reached. The basic pilot pressure setting can be compensated (increased) through the "I" port in order to take into account "induced" pressure.

They are brought into closed mode by maintaining pressure at the "RS" port, and they remain closed after the pilot pressure has decreased.

They are specially designed with minimized leakage and very limited hysteresis for applications as load limiting devices on truck loader cranes.

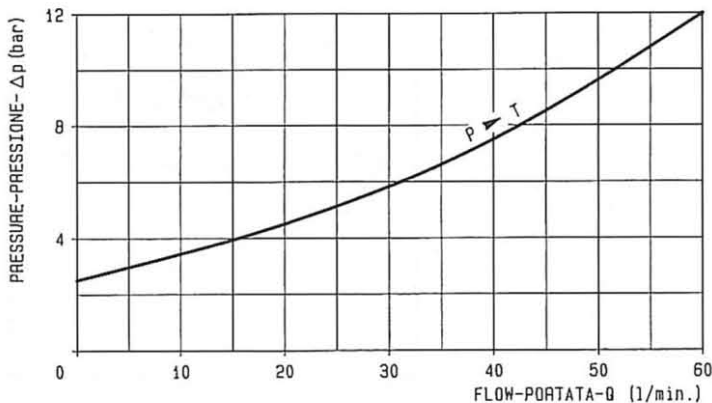



Pressione di lavoro max
350 bar
Max working pressure
350 bar

Portata max
60 l/min.
Flow max
60 l/min.

Peso Kg 0,82

Weight Kg 0,82



X	REGOLAZIONI ADJUSTMENTS
03	vite esterna leakproof hex. 

Z	MOLLE - SPRINGS				
	Campo taratura min-max bar Adj.press. range bar	Incremento pressione bar/giro vite Pressure increase bar/turn	Taratura standard bar (q=5 l/1') Std.setting bar (made at 5 l/1')	Codice ordinazione Ordering code	Colore Colour
35	100-350	72	250	03.51.01.059	giallo yellow

Y	ATTACCHI / PORT SIZE			
	P - T	Pil-RS	I	M
03	1/2" BSPP	1/4" BSPP	M16x1.5	M10x1

MAR. 93