

Part number:

**093-10108**

**HYDROMA**

HYDRAULICKÉ SYSTÉMY

**HIDROMA  
SYSTEMS**

UKŁADY HYDRAULICZNE

**HYDROMA**

ГИДРАВЛИЧЕСКИЕ СИСТЕМЫ



# RL1M

## ELECTRIC FAST/SLOW SPEED SELECTION VALVE SERIES 21

**MODULAR VERSION**

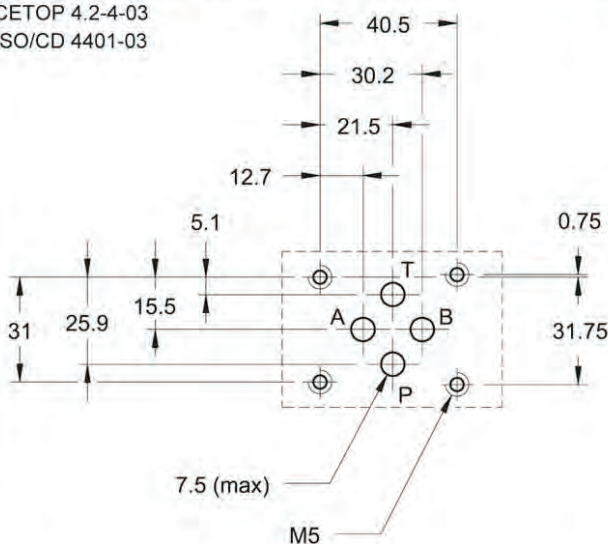
**CETOP 03**

**p max 250 bar**

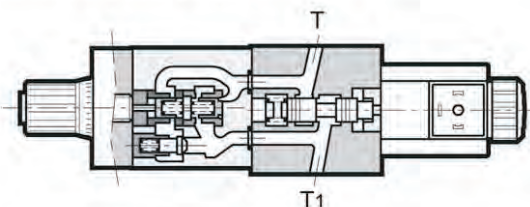
**Q max (see performance ratings table)**

### MOUNTING INTERFACE

CETOP 4.2-4-03  
ISO/CD 4401-03



### OPERATING PRINCIPLE



- The RL1M valve is a compact group that allows control of the fast/slow flow through use of an open/close solenoid valve. The adjustment of the flow is carried out with the RPC1 valve (see catalogue 32 200) with six adjustment ranges.
- Made as a modular version, the mounting surface is according to the CETOP and ISO standards.
- The RL1M valve can be assembled quickly under the MD1D directional valves (see catalogue 41 200) without use of pipes, using suitable tie-rods or bolts, permitting the construction of directional and speed controls for work actuators.

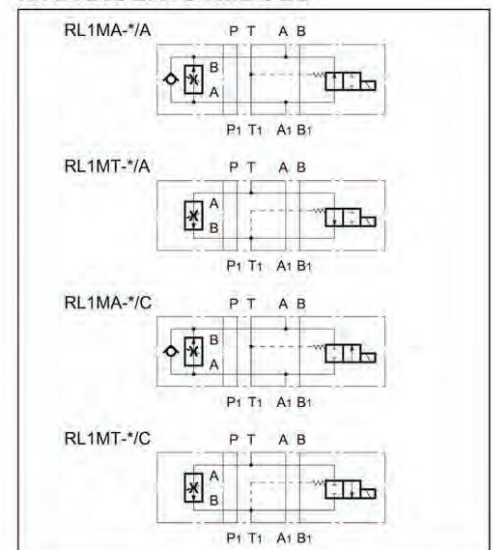
### CONFIGURATIONS (see Hydraulic symbols table)

- Configuration "A": meter out control from the actuator on chamber A.
- Configuration "T": control on discharge T of the directional solenoid valve for speed control in both directions of movement.

### PERFORMANCE RATINGS (measured with mineral oil of viscosity 36cSt at 50°C)

Maximum operating pressure	bar	250
Maximum flow rate in the controlled lines	l/min	1-4-10-16-22-30
Maximum flow rate in the free lines	l/min	65
Minimum controlled flow rate	l/min	0,08
Ambient temperature range	°C	-20 ÷ +50
Fluid temperature range	°C	-20 ÷ +70
Fluid viscosity range	cSt	2,8 ÷ 380
Recommended filtration	µm absolute	≤ 25
Recommended viscosity	cSt	25
Mass	kg	3

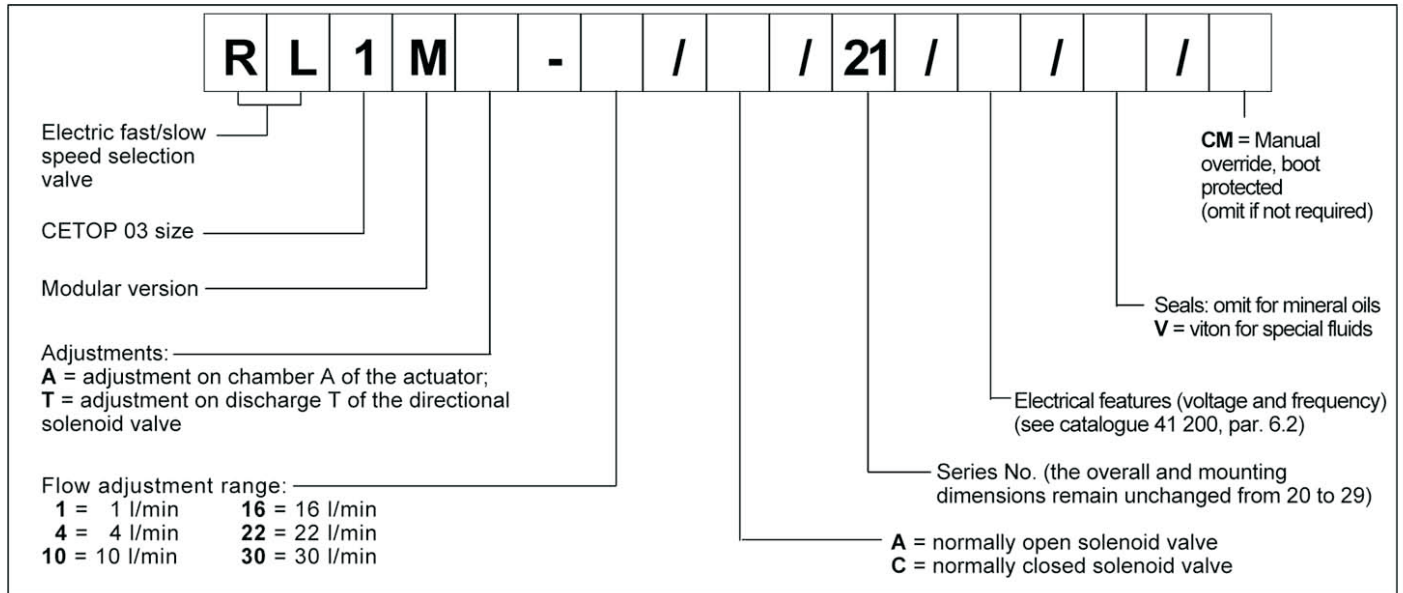
### HYDRAULIC SYMBOLS



# RL1M

## SERIES 21

### 1 - IDENTIFICATION CODE



**NOTE :** for more information regarding the flow control valve, see catalogue 32 200

**NOTE:** The solenoid valves are never supplied with connector. Connectors must be ordered separately.

For the identification of the connector type to be ordered, please see catalogue 49 000.

### 2 - HYDRAULIC FLUIDS

Use mineral oil-based hydraulic fluids, with the addition of suitable anti-frothing and anti-oxidizing agents.

For the use of other types (water glycol, phosphate esters and others), please consult our technical department.

### 3 - OVERALL AND MOUNTING DIMENSIONS

