

Part number:

009-10165a

**HYDROMA**

HYDRAULICKÉ SYSTÉMY

**HIDROMA  
SYSTEMS**

UKŁADY HYDRAULICZNE

**HYDROMA**

ГИДРАВЛИЧЕСКИЕ СИСТЕМЫ

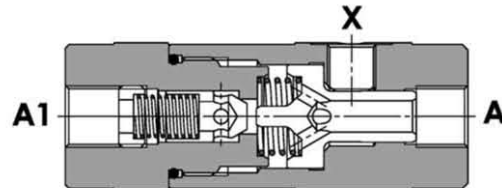
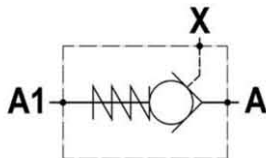
Tipo/Type

**FPS-\*.\*\*.\***

Sez/Section

**E**

Valvola di blocco pilotata semplice, montaggio in linea  
Single pilot operated check valve, line mounted



**SPECIFICHE TECNICHE**

**Materiali:** corpo in acciaio. L'otturatore conico guidato è in acciaio trattato termicamente. La superficie esterna è protetta mediante zincatura.

**Portata:** fino a 85 l/min

**Pressione max.:** 350 bar

**Pressione di apertura:** standard 0,5 bar, a richiesta 2,5-5-10 bar

**TECHNICAL SPECIFICATIONS**

**Materials:** body is steel made. Guided poppet is in hardened steel. External surface is zinc plated.

**Rated flow:** up to 85 l/min

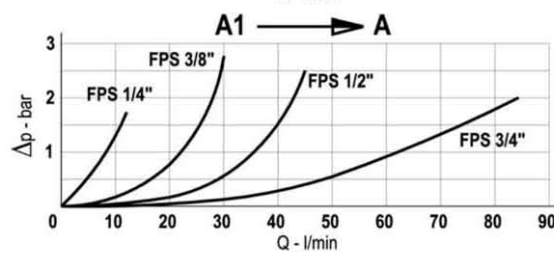
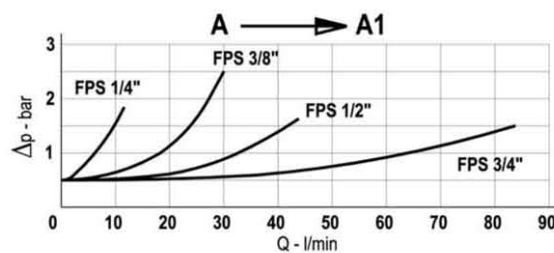
**Max. pressure:** 350 bar, see data sheet

**Cracking pressure:** 0,5 bar standard, 2,5-5-10 bar on request

**DIAGRAMMA PERDITE DI CARICO - PRESSURE DROP CURVES**

Viscosità olio 24 mm<sup>2</sup>/sec. (3,5 °E)  
Temperatura 50 °C

Oil viscosity 24 mm<sup>2</sup>/sec. (3,5 °E)  
Temperature 50 °C



Part number:

**009-10165b**

**HYDROMA**

HYDRAULICKÉ SYSTÉMY

**HIDROMA  
SYSTEMS**

UKŁADY HYDRAULICZNE

**HYDROMA**

ГИДРАВЛИЧЕСКИЕ СИСТЕМЫ

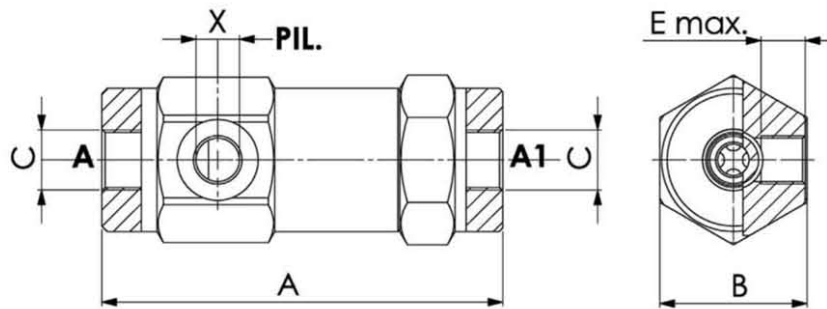
Tipo/Type

**FPS-\*.\*\*.\***

Sez./Section

**E**

Valvola di blocco pilotata semplice, montaggio in linea  
Single pilot operated check valve, line mounted



TIPO TYPE	PORTATA MAX. MAX. FLOW	PRESSIONE MAX. MAX. PRESSURE	A	B	C	X	E	PESO WEIGHT
	l/min	bar	mm	mm	BSPP	BSPP	mm	Kg
FPS 1/4	12	350	103	36	1/4"	1/4"	11	0.650
FPS 3/8	30	310	109	40	3/8"	1/4"	11.5	0.820
FPS 1/2	45	310	120	42	1/2"	1/4"	11	0.960
FPS 3/4	85	300	131	55	3/4"	1/4"	14	1.950

	FPS 1/4	FPS 3/8	FPS 1/2	FPS 3/4
Rapporto di pilotaggio - Pilot ratio	1 : 9	1 : 6	1 : 4.5	1 : 3.7

**ESEMPIO DI ORDINAZIONE - ORDERING CODE EXAMPLE**

