

Part number:

009-10161a

**HYDROMA**

HYDRAULICKÉ SYSTÉMY

**HIDROMA  
SYSTEMS**

UKŁADY HYDRAULICZNE

**HYDROMA**

ГИДРАВЛИЧЕСКИЕ СИСТЕМЫ

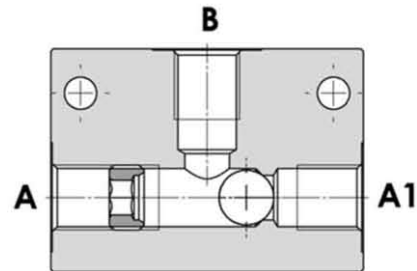
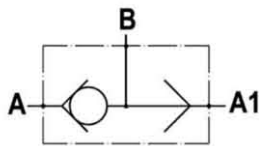
Tipo/Type

**FPT-\***

Sez/Section

**G**

Valvola di commutazione, montaggio in linea  
Shuttle valve, line mounted



**SPECIFICHE TECNICHE**

**Materiali:** corpo in acciaio. La sfera è in acciaio trattato termicamente. La superficie esterna è protetta mediante zincatura.

**Portata max.:** fino a 110 l/min

**Pressione max.:** 350 bar, vedasi tabella a parte

**Connessioni:** 1/4" - 3/8" - 1/2" - 3/4" BSP

**TECHNICAL SPECIFICATIONS**

**Materials:** body is steel made. Ball is in hardened steel. External surface is zinc plated.

**Rated flow:** up to 110 l/min

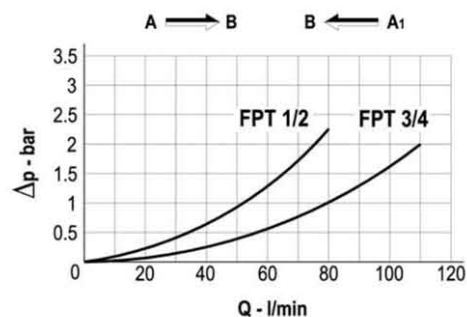
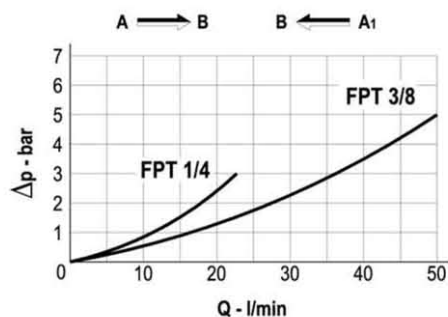
**Max. pressure:** 350 bar, see data sheet

**Ports:** 1/4" - 3/8" - 1/2" - 3/4" BSP

**DIAGRAMMA PERDITE DI CARICO - PRESSURE DROP CURVES**

Viscosità olio 24 mm<sup>2</sup>/sec. (3,5 °E)  
Temperatura 50 °C

Oil viscosity 24 mm<sup>2</sup>/sec. (3,5 °E)  
Temperature 50 °C



Part number:

**009-10161b**

**HYDROMA**

HYDRAULICKÉ SYSTÉMY

**HIDROMA  
SYSTEMS**

UKŁADY HYDRAULICZNE

**HYDROMA**

ГИДРАВЛИЧЕСКИЕ СИСТЕМЫ

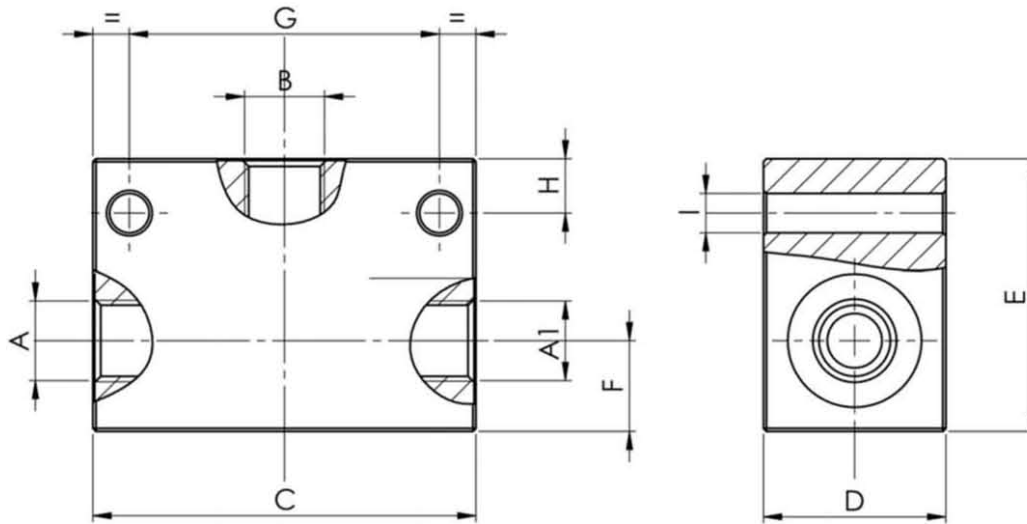
Tipo / Type

**FPT-\***

Sez./Section

**G**

Valvola di commutazione, montaggio in linea  
Shuttle valve, line mounted



TIPO TYPE	PORTATA MAX. MAX. FLOW	PRESSIONE MAX. MAX. PRESSURE	A - A1 - B	C	D	E	F	G	H	I	PESO WEIGHT
	L/MIN	BAR	BSPP	mm	mm	mm	mm	mm	mm	mm	Kg
FPT 1/4"	25	350	1/4"	63	30	45	15	51	9	6.5	0,570
FPT 3/8"	50	350	3/8"	63	30	45	15	51	9	6.5	0,530
FPT 1/2"	80	300	1/2"	90	40	60	20	75	7.5	8.5	1,450
FPT 3/4"	110	300	3/4"	90	40	60	20	75	7.5	8.5	1,350

**ESEMPIO DI ORDINAZIONE – ORDERING CODE EXAMPLE**

