

Part number:

009-10114a

HYDROMA

HYDRAULICKÉ SYSTÉMY

**HIDROMA
SYSTEMS**

UKŁADY HYDRAULICZNE

HYDROMA

ГИДРАВЛИЧЕСКИЕ СИСТЕМЫ

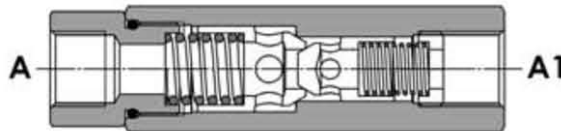
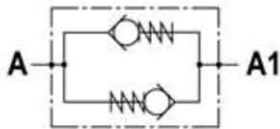
Tipo/Type

FPR D-*.*.*.*

Sez./Section

D

Valvola a ritegni contrapposti, montaggio in linea
Bi-directional in line poppet check valve



SPECIFICHE TECNICHE

Materiali: corpo in acciaio, protetto mediante zincatura. I ritegni sono in acciaio trattato termicamente.

Portata: fino a 85 l/min

Pressione max.: 350 bar

Pressione di apertura ritegni: standard A-A1: 0.5 bar, A1-A: 8 bar.

TECHNICAL SPECIFICATIONS

Materials: body is steel made, zinc plated. The poppets are in hardened steel.

Rated flow: up to 85 l/min

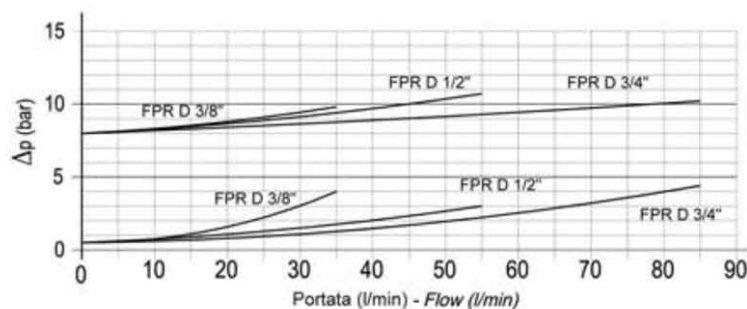
Max. pressure: 350 bar

Cracking pressure: A-A1: 0.5 bar, A1-A: 8 bar (standard)

DIAGRAMMA PERDITE DI CARICO - PRESSURE DROP CURVES

Viscosità olio 24 mm²/sec. (3,5 °E)
Temperatura 50 °C

Oil viscosity 24 mm²/sec. (3,5 °E)
Temperature 50 °C



Part number:

009-10114b

HYDROMA

HYDRAULICKÉ SYSTÉMY

**HIDROMA
SYSTEMS**

UKŁADY HYDRAULICZNE

HYDROMA

ГИДРАВЛИЧЕСКИЕ СИСТЕМЫ

Tipo/Type

FPR D-*.*.*.*

Sez/Section

D

Valvola a ritegni contrapposti, montaggio in linea
Bi-directional in line poppet check valve



TIPO TYPE	PORTATA MAX. MAX. FLOW	PRESSIONE MAX. MAX. PRESSURE	B	C	D	Ch1	Ch2	Peso Weight
	l/min	bar	mm	mm	BSP	mm	mm	Kg
FPR D 3/8"	35	350	99	11	3/8"	27	30	0,455
FPR D 1/2"	55	350	127	21	1/2"	30	32	0,592
FPR D 3/4"	85	350	135.5	14	3/4"	42	46	1,426

ESEMPIO DI ORDINAZIONE – ORDERING CODE EXAMPLE

