

Part number:

006-10266

HYDROMA

HYDRAULICKÉ SYSTÉMY

**HIDROMA
SISTEMS**

UKŁADY HYDRAULICZNE

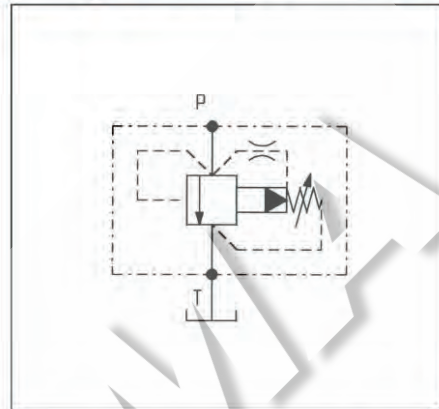
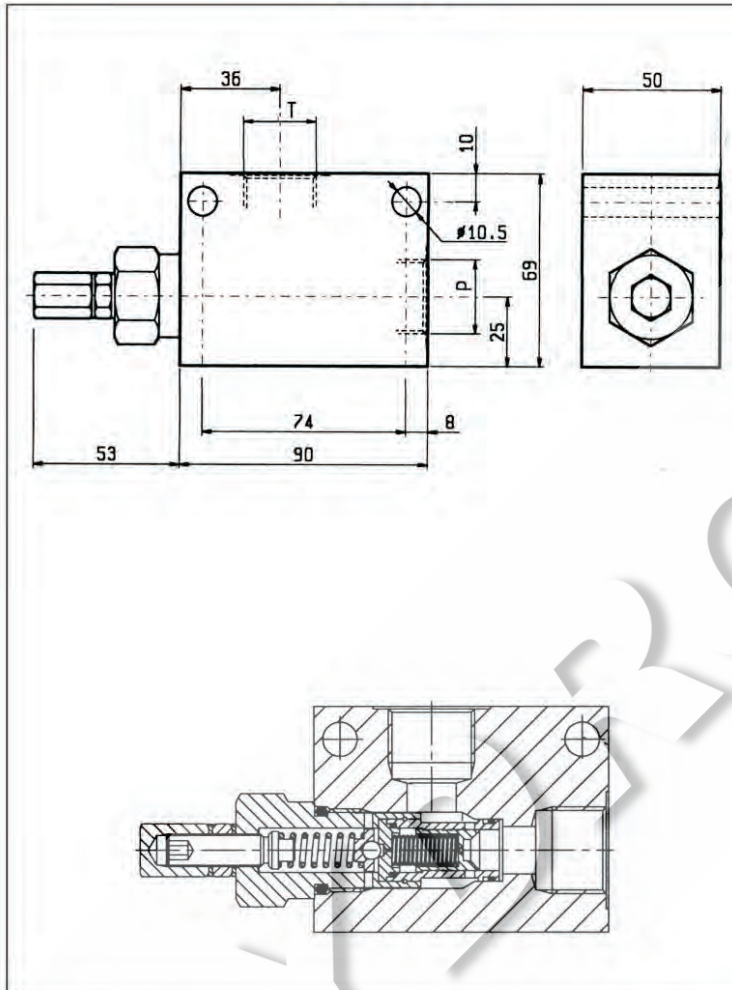
HYDROMA

ГИДРАВЛИЧЕСКИЕ СИСТЕМЫ

**MASSIMA PRESSIONE, PILOTATE, OTTURATORE CILINDRICO
PILOT OPERATED, SPOOL TYPE RELIEF**

VSPC-150

05.11.05 - X - Y - Z



DATI TECNICI / TECHNICAL DATA

* Pressione di lavoro max. 350 bar
* Max. working pressure 350 bar

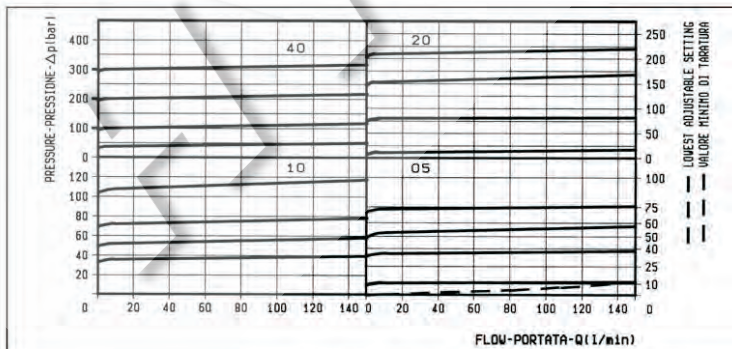
Portata max. 150 l/min
Flow max. 150 l/min

Peso 0.9 kg
Weight 0.9 kg

Trafilamento: circa 0,10 l/min alla massima pressione.
Leakage: 0.10 l/min approx at max relief setting.

Classe di pulizia dell'olio: almeno 18/14 ISO 4406 (9 NAS-1638).
Fluid cleanliness class: 18/14 ISO 4406 (9 NAS-1638) or better.

Utilizzabili in applicazioni in cui la pressione allo scarico "T" sia sempre inferiore alla pressione della linea "P".
Suitable for applications where pressure in the return line "T" never exceeds the pressure in the "P" line.



| X | REGOLAZIONI ADJUSTMENTS | |
|----|---|--|
| 03 | vite interna esagono incassato leakproof inner hex. socket screw | |
| 04 | volantino e predisposizione montaggio a pannello handknob and locknut panel mounting | |
| | cappello per piombatura sealing cap codice / ordering code 03.05.01.004 | |

| Z | MOLLE / SPRINGS | | | | |
|----|---|---|---|-----------------------------------|------------------|
| | Campo taratura min - max bar Adj. press. range bar | Incremento press. bar / giro vite Press. increase bar / turn | Taratura standard bar (Q = 5 l/min) Std. setting bar (made at 5 l/min) | Cod. ordinazione Ordering code | Colore Colour |
| 05 | 1.7-70 | 20.5 | 50 | | nero black |
| 10 | 7-105 | 26 | 100 | | blu blue |
| 20 | 10-210 | 35 | 200 | | verde green |
| 40 | 35-420 * | 115 | 350 | | giallo yellow |

| Y | ATTACCHI / PORT SIZE | |
|----|----------------------|--|
| | P - T | |
| 03 | G 1/2 | |
| 04 | G 3/4 | |
| 05 | G 1 | |