

Part number:

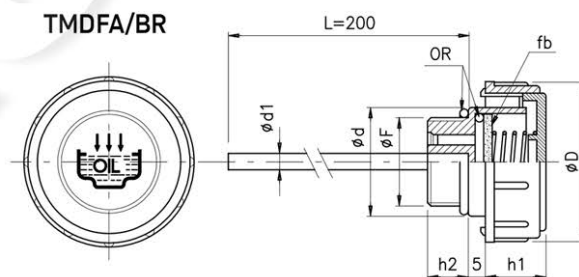
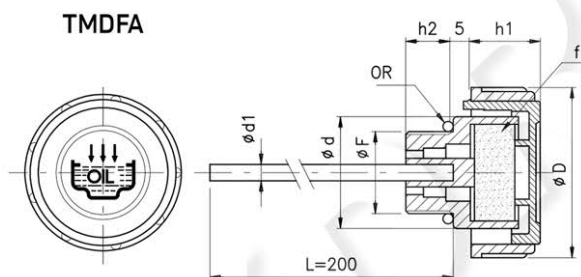
**TMDA - FILLER BREATHERS WITH DIPSTICK**

**TMDFA - FILLER BREATHERS WITH DIPSTICK AND FILTER**

**TMDFA/BR - FILLER BREATHERS WITH DIPSTICK AND SINTERED BRONZE FILTER**



plugs, breathers and dipsticks



fb = Bronze filter  
f = Air filter  
OR = O-Ring NBR seal

These filler breathers have the same characteristics as the models TMD-TMDF, but are equipped with a steel level dipstick with zinc phosphate surface.

-The standard dipstick is 200 mm in length, but on orders that exceed 250 pieces, the dipstick can be cut to custom length, and notches can be placed to indicate "MIN-MAX" oil level.

-Airflow capacity (P) indicated in the table expressed in

liters/minute using a tank pressure of 50 mbar (0.73 psi).

-In the kind of applications where the vent hole is subject to strong oil splashes, especially during the starting of the machine when the oil is still thick, we suggest to utilize the model **TMDFA/BR** with air filter element in sintered bronze (30 micron). This allows the air to flow but stops fluid overflowing due to the bronze filter being non absorbent.

-NPT Threads available on 3/8"-1/2"-3/4"-1".

Code	P	Code	P	Code	P	F	D	d	d1	h1	h2
TMDA-38	260	TMDFA-38	170	TMDFA-38/BR	93	G 3/8"	36	23	4	17	11
TMDA-12	225	TMDFA-12	183	TMDFA-12/BR	100	G 1/2"	41	28	4	18	12
TMDA-34	520	TMDFA-34	420	TMDFA-34/BR	230	G 3/4"	47	33	5	17	12
TMDA-1	400	TMDFA-1	380	TMDFA-1/BR	260	G 1"	52	38	5	20	12
TMDA-114		TMDFA-114	650	TMDFA-114/BR	200	G 1 1/4"	63	49	5	23	13
TMDA-112		TMDFA-112	600	TMDFA-112/BR	200	G 1 1/2"	63	55	5	23	13.5
TMDA-16.15	260	TMDFA-16.15	170	TMDFA-16.15/BR	93	M 16x1,5	36	23	4	17	11
TMDA-18.15	170	TMDFA-18.15	170	TMDFA-18.15/BR	90	M 18x1,5	41	28	4	17,5	12
TMDA-20.15	225	TMDFA-20.15	183	TMDFA-20.15/BR	100	M 20x1,5	41	28	4	17,5	12
TMDA-22.15	225	TMDFA-22.15	183	TMDFA-22.15/BR	100	M 22x1,5	41	28	4	17,5	12