

Part number:

**HYDROMA**

HYDRAULICKÉ SYSTÉMY

**HIDROMA  
SYSTEMS**

UKŁADY HYDRAULICZNE

**HYDROMA**

ГИДРАВЛИЧЕСКИЕ СИСТЕМЫ

 **Kawasaki**  
Powering your potential



## HANSA-TMP Innovation & Technology in Hydraulic Systems

HANSA-TMP has been selected as official distributor by the major world players in the hydraulic field. Our market is expanding locally and globally thanks to the expertise acquired during the past decades; we are able to find the best fit for the most difficult applications. A team of engineers assists our customers during the set up phase, technical assistance, warranty and maintenance.

Kawasaki - Based in Plymouth, UK, the factory is a highly automated manufacturing facility that produces a wide range of products including axial piston pumps, axial and radial piston motors and valves.

ISO 9001 Quality Certification

ISO 14001 Environmental Certification



## Contents

Product	Page
<a href="#">K3VL, K3VLS Open Loop System Axial Piston Pumps</a>	4 - 5
<a href="#">K8V Closed Loop System Axial Piston Pump</a>	6
<a href="#">M7V High Speed Axial Piston Motor</a>	7 - 9
<a href="#">K3V, K5V, K7SP36, K7VG, K3VG, K3VGD Open Loop System Axial Piston Pumps</a>	10 - 11
<a href="#">HMB, HMC, HPC, HPC400 Radial Piston Motors</a>	12 - 13
<a href="#">M3X, M3B, M2X-M5X, K3X Axial Piston Motors for Construction Machinery</a>	14
<a href="#">KLSV, PV48, RCV8C Valves</a>	15 - 18
<a href="#">Mobile, Industrial, Marine Applications</a>	

## K3VL

Medium pressure, swash plate, open loop axial piston pumps,  
for both industrial and mobile applications



### Features:

- High power density
- High performances
- High reliability
- High self priming capability
- Wide range of controls
- Spherical valve plate
- Standard ISO / SAE mounting and porting
- Through drive options
- Torque control available

Pump model	Displacement cm <sup>3</sup> /n	Rated pressure MPa	Peak pressure MPa	Rotation speed n/min.	
				Max. for self-priming	Max.
<b>K3VL 28</b>	28	32	35	3.000	3.400
<b>K3VL 45</b>	45	32	35	2.700	3.250
<b>K3VL 60</b>	60	25	28	2.400	3.000
<b>K3VL 80</b>	80	32	35	2.400	3.000
<b>K3VL 112</b>	112	32	35	2.200	2.700
<b>K3VL 140</b>	140	32	35	2.100	2.500
<b>K3VL 200</b>	200	35	40	1.900	2.200

## PMV

Proportional electro-hydraulic control for K3VL pump series



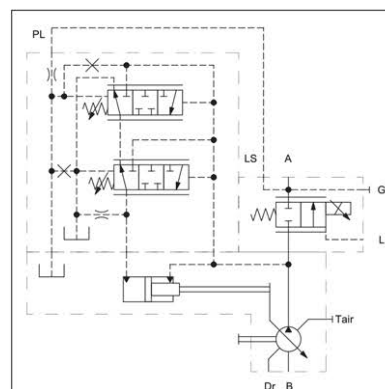
### Features:

- Compact dimensions
- Flanged to the pump outlet
- Maximum flow limited by screw
- Flow control independent by the pump speed
- 12V DC and 24V DC solenoids available

The PMV valve is an electro-proportional flow control for K3VL pumps with LS control.

The valve is designed to be directly flanged to the K3VL45, 60 e 80 pumps with 1" SAE 3000 outlet ports.

The valve can be combined with the constant power control and the electro-proportional pressure control for a complete control of the system performances.





## K3VL28 (Fan Drive)

Medium pressure, swash plate, open loop axial piston pumps,  
for both industrial and mobile applications

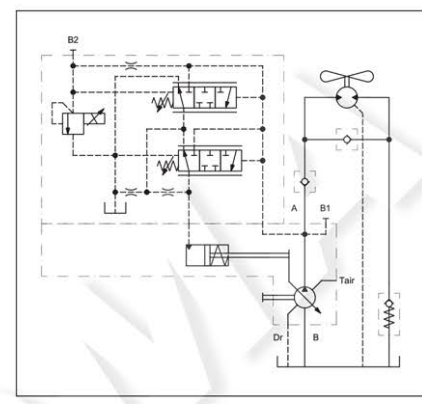


**Features:**

- Low noise level
- High rotation speed
- Compact design and reduced length
- Suitable for multiple pump assembly

The K3VL pump 28 Fan Drive is variable displacement axial piston pump with a proportional electric controller which can be operated either by the Diesel engine control unit or by the machine control unit.

In this way the cooling air flow is optimized with the temperature of the combustion engine reducing the noise and increasing the efficiency of the system.



## K3VLS

Medium pressure, swash plate, open loop axial piston pumps,  
for both industrial and mobile applications (medium duty)



**Features:**

- High overall efficiency
- Compact size
- Light weight
- Excellent reliability
- Wide range of controls
- High stability
- High responsive controls

Pump model	Displacement cm <sup>3</sup> /n	Rated pressure MPa	Peak pressure MPa	Rotation speed n/min.	
				Max. for self-priming	Max.
K3VLS 65	65	28	35	2.600	3.000
K3VLS 85	85			2.500	3.000
K3VLS 105	105			2.300	2.640



**K3VLS with integrated auxiliary pump**

The K3VLS pumps are also available in the version with integrated auxiliary gear pump with only one suction port.

## K8V

High pressure, variable displacement closed loop circuit axial piston pumps, for industrial applications


**Features:**

- Wide range of controls
- Global standard shaft and mount
- Optimised rotating group
- Additional valves
- Additional sensor options
- Variety of throughdrive options

Pump model	Displacement cm <sup>3</sup> /n.	Rated pressure MPa	Peak pressure MPa	Maximum speed n/min.	Weight kg (single pump)
<b>K8V 90</b>	90	40	45	3.050	81,5
<b>K8V 125</b>	130			2.850	

## M7V

High pressure, variable displacement axial piston motors for open and closed loop circuit, for industrial applications


**Features:**

- Swash plate
- High speed operation
- Smooth starting characteristics
- Low speed operation
- Compact size
- Long bearing life

Motor model	Displacement max. / min. cm <sup>3</sup> /n	Theoretical output torque * at rated pressure Nm	Rated pressure MPa	Max. pressure MPa	Continuous speed * n/min.	Max. power * kW	Approx weight kg
<b>M7V 85 **</b>	85 / 65	541	40	45	3.900	221	-
<b>M7V 112</b>	112 / 85	713			3.550	265	45
<b>M7V 160 **</b>	160 / 120	1.019			3.100	331	-

\* At maximum displacement

\*\* Displacement 85 and 160 soon available

## K3V

Medium pressure, swash plate, open loop axial piston pumps,  
for industrial and mobile applications



### Features:

- High pressure
- High performances
- High reliability
- Long life
- Low noise
- Wide range of control options

Pump model	Displacement cm <sup>3</sup> /n	Rated pressure MPa	Peak pressure MPa	Rotation speed n/min.	
				Max. for self-priming	Max.
<b>K3V 63</b>	63	34	39	2.650	3.250
<b>K3V 112</b>	112			2.360	2.700
<b>K3V 140</b>	140			2.150	2.500
<b>K3V 280</b>	280			1.600	2.000
<b>K3V 63 DT</b>	63+63			2.650	3.250
<b>K3V 112 DT</b>	112+112			2.360	2.700
<b>K3V 140 DT</b>	140+140			2.150	2.500
<b>K3V 280 DT</b>	280+280			1.600	2.000

## K5V

Medium pressure, swash plate, open loop axial piston pumps,  
for industrial and mobile applications



### Features:

- Standard SAE flange and shaft
- High efficiency and high self priming capability
- Low noise
- Wide range of hydraulic and electric controls

Pump model	Displacement cm <sup>3</sup> /n	Rated pressure MPa	Peak pressure MPa	Rotation speed n/min.	
				Max. for self-priming	Max.
<b>K5V 80</b>	80	34	39	2.460	3.000
<b>K5V 140</b>	140			2.160	2.500
<b>K5V 160</b>	160			2.000	2.350
<b>K5V 200</b>	200			1.900	2.200
<b>K5V 80 DT</b>	80+80			2.460	3.000
<b>K5V 140 DT</b>	140+140			2.160	2.500
<b>K5V 160 DT</b>	160+160			2.000	2.350
<b>K5V 200 DT</b>	200+200			1.900	2.200



## K7SP36

Medium pressure, swash plate, open loop axial piston double pumps,  
for mini-exavators



### Features:

- Compact design one suction double pump
- High reliability
- Low noise
- Optional third pump
- Constant power control

Pump model	Displacement cm <sup>3</sup> /n	Rated pressure MPa	Peak pressure MPa	Max. rotation speed for self-priming n/min.
<b>K7SP36</b>	36 + 36	30	32	2.300

## K7VG

High pressure, swash plate, open loop axial piston pumps,  
for industrial applications



### Features:

- High power density
- High performances
- High reliability
- Long life
- Low noise and high efficiency
- Wide range of controls
- Enhanced bearing life
- SAE mouting and shaft

Pump model	Displacement cm <sup>3</sup> /n	Rated pressure MPa	Peak pressure MPa	Rotation speed n/min.	
				Max. for self-priming	Max.
<b>K7VG 180</b>	180	35	40	1.800	2.300
<b>K7VG 265</b>	270			1.600	1.900

## K3VG

High pressure, swash plate, open loop axial piston pumps,  
for industrial applications



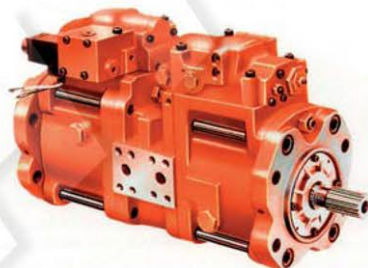
### Features:

- High pressure
- High performances
- High reliability
- Long life
- Modular design
- Low noise and high efficiency
- High self priming capability
- Wide range of controls

Pump model	Displacement cm <sup>3</sup> /n	Rated pressure MPa	Peak pressure MPa	Rotation speed n/min.	
				Max. for self-priming	Max.
K3VG 63	63	35	40	1.800	3.250
K3VG 112	112			1.800	2.700
K3VG 180	180			1.800	2.300
K3VG 280	280			1.500	2.000
K3VG 180 DT	180+180			1.800	2.300
K3VG 280 DT	280+280			1.500	2.000

## K3VGDT

High pressure, swash plate, open loop axial piston pumps,  
for industrial applications



### Features:

- High pressure
- High performances
- High reliability
- Long life
- Modular design
- Low noise and high efficiency
- High self priming capability
- Wide range of controls
- Compact design double pump

Pump model	Displacement cm <sup>3</sup> /n	Rated pressure MPa	Peak pressure MPa	Rotation speed n/min.	
				Max. for self-priming	Max.
K3VG 180 DT	180+180	35	40	1.800	2.300
K3VG 280 DT	280+280			1.500	2.000



## HMB

Fixed displacement radial piston motors for industrial applications



### Features:

- High performance
- High reliability
- Good cavitation tolerance
- Large variety of porting options
- Speed and positioning control options
- High starting and running torque
- Wide range of displacements available

Motor model	Displacement cm <sup>3</sup> /n	Rated pressure MPa	Intermittent pressure MPa	Continuous speed n/min.	Continuous power kW	Approx weight kg
HMB 010	188	20,7	24	500	25	40
HMB 030	442	20,7	29	450	42	73
HMB 045	740	25	29	400	60	120
HMB 060	983	25	29	300	80	144
HMB 080	1.344	25	29	300	100	144
HMB 100	1.639	25	29	250	110	144
HMB 125	2.050	25	29	220	100	217
HMB 150	2.470	25	29	220	115	265
HMB 200	3.080	25	29	175	130	265
HMB 270	4.310	25	29	125	140	420
HMB 325	5.310	25	29	100	140	429
HMB 400 (4")	6.800	25	29	120	190	481
HMB 400 (4-1/2")						510

## HMC

Dual displacement radial piston motors for industrial applications



### Features:

- Dual displacement
- Constant horsepower control option
- High starting and running torque
- High mechanical efficiency
- Smooth, steady, low speed operation
- High performances
- Good cavitation tolerance
- Large variety of porting options
- Speed and positioning control options
- Wide range of displacements available

Motor model	Displacement min. / max. * cm <sup>3</sup> /n	Rated pressure MPa	Intermittent pressure MPa	Continuous speed ** n/min.	Continuous power *** kW	Approx weight kg
HMC 030	49 - 492	20,7	24,1	1.000 - 450	60	100
HMC 045	81 - 737	25	27,5	1.000 - 450	99	150
HMC 080	82 - 1.475	25	27,5	1.000 - 300	138	172
HMC 125	82 - 2.048	25	27,5	1.000 - 190	135	235
HMC 200	80 - 3.080	25	27,5	1.000 - 175	174	282
HMC 270	160 - 4.588	25	27,5	1.000 - 120	189	450
HMC 325	492 - 5.326	25	27,5	350 - 100	189	460

\* Intermediate displacement available

\*\* At min. / max. displacement

\*\*\* At max. displacement

## HPC

High power, dual displacement radial piston motors for industrial applications



### Features:

- Dual displacement
- Constant horsepower control option
- High starting and running torque
- High mechanical efficiency
- Smooth, steady, low speed operation
- High performances
- Good cavitation tolerance
- Large variety of porting options
- Speed and positioning control options
- Wide range of displacements available
- Enhanced power performance

Motor model	Displacement min. / max. * cm <sup>3</sup> /n	Rated pressure MPa	Intermittent pressure MPa	Continuous speed ** n/min.	Continuous power *** kW	Approx weight kg
HPC 080	164 - 1.600	25	27,5	1.000 - 270	165	172
HPC 125	164 - 2.048	25	27,5	1.000 - 190	202	235
HPC 200	164 - 3.087	25	27,5	1.000 - 175	261	282
HPC 270	328 - 4.588	25	27,5	1.000 - 120	278	450
HPC 325	492 - 5.326	25	27,5	350 - 100	278	460

\* Intermediate displacement available  
 \*\* At min. / max. displacement  
 \*\*\* At max. displacement, 25 MPa, with flushing

## HPC400

High power, 4-speed, radial piston motors for industrial applications



### Features:

- Total displacement 6.554 cm<sup>3</sup>/n
- Max. continuous power of 430 kW
- Smooth operation at low speed
- Dynamic displacement change
- Rated torque of 25.000 Nm
- Freewheel option available
- Rugged Staffa design
- High starting torque
- 25 MPa continuous rating

Motor model	Displacement front max. / min. cm <sup>3</sup> /n	Displacement rear max. / min. cm <sup>3</sup> /n	Rated pressure MPa	Max. pressure MPa	Continuous speed (max. disp.) n/min	Continuous speed (min. disp.) n/min	Max. power kW	Approx weight kg
HPC 400	3.277 - 0	3.277 - 0	25	27	220	1.500	430	590

## M3X

Fixed displacement axial piston motors for industrial applications



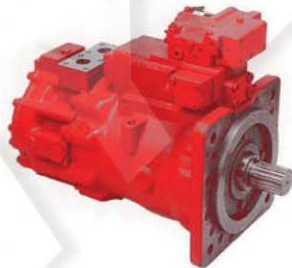
### Features:

- Compact design
- High performance
- High reliability
- Male or female shaft options
- Built in parking brake option
- Advanced low speed characteristics
- Smooth starting characteristics
- High speed operation
- Wide capacity range

Motor model	Displacement cm <sup>3</sup> /n	Rated pressure MPa	Max. pressure MPa	Continuous speed n/min.	Max. power kW	Approx weight kg
<b>M3X 200</b>	195	30	35	1.900	180	42
<b>M3X 280</b>	280	30	35	1.700	230	63
<b>M3X 530</b>	533	30	35	1.400	370	90
<b>M3X 800</b>	800	30	35	1.200	470	133

## M3B

Dual displacement axial piston motors for industrial applications



### Features:

- Compact design
- High performances
- High reliability
- Advanced low-speed characteristics
- Smooth starting characteristics
- High speed operation
- Electric displacement control
- Variable displacement

Motor model	Displacement max. / min. cm <sup>3</sup> /n	Rated pressure MPa	Max. pressure MPa	Continuous speed * n/min.	Max. power ** kW	Approx weight kg
<b>M3B 200</b>	195 - 106	32	35	1.900 - 2.930	200	72
<b>M3B 280</b>	280 - 93	30	35	1.700 - 2.200	240	93
<b>M3B 530</b>	533 - 178	30	35	1.400 - 1.700	370	147
<b>M3B 800</b>	800 - 267	30	35	1.200 - 1.500	470	235

\* At max. / min. displacement

\*\* At max. displacement



## M2X - M5X

Fixed displacement axial piston motors for industrial applications



### Features:

- Moor for excavator swing operation
- Integrated valves
- Direct connecting to reduction gear
- High performance and reliability
- Built in shockless relief valves
- Built in parking brake
- Optional time delay valve
- Optional anti-reaction valve

Motor model	Displacement cm <sup>3</sup> /n	Rated pressure MPa	Max. pressure MPa	Continuous speed n/min.	Rated torque Nm	Approx weight kg
M2X 22	22	21	24,5	2.500	72,1	14
M2X 45	45	21	24,5	2.000	149	24
M2X 63	64	30	34,5	2.200	300	26
M2X 150	148,5	30	34,5	1.600	696	63
M2X 170	169,4	30	34,5	1.500	794	63
M2X 210	210	30	34,5	1.400	984	71
M5X 130	129	33	40	1.850	665	50
M5X 180	180	33	40	1.680	928	60

## K3X

Fixed displacement axial piston motors for industrial applications



### Features:

- Spherical valve plate
- Simple construction
- High efficiency
- Low noise
- High reliability
- High performance
- High speed capability
- Heavy duty versions available

Motor model	Displacement cm <sup>3</sup> /n	Rated pressure MPa	Max. pressure MPa	Continuous speed n/min.	Max. power kW	Approx weight kg
K3X 63	63	32	35	3.000	80	23
K3X 80	82				129	40
K3X 90	89				140	40
K3X 112	111				174	40

## KLSV

Multiple control valves for load-sensing circuits



### Features:

- Post-compensated, flow-sharing design
- Hydraulic pilot and electro-hydraulic actuation
- Special versions for wheel loaders, midi excavators and skid steer loaders
- Three sizes with sectional flow rates of 180, 250 and 400 l/min.

## PV48

Remote control pilot valves



### Features:

- High responsive, low hysteresis
- Inlet flow max. 20 lt / min.
- Inlet pressure max. 7 MPa
- Control pressure range 0 - 3 MPa

## RCV8C

Remote control pilot valves



### Features:

- High responsive, low hysteresis
- Inlet flow max. 10 lt / min.
- Inlet pressure max. 9,6 MPa
- Control pressure range 0 - 4,4 MPa
- Available in a 1 or 2 section mono-block

# Applications

## Mobile



**Excavator**  
K3V Axial Piston Pump



M2X Swash Plate Axial Piston Motor

**Concrete Pump**  
K3VL Axial Piston Pump



**Truck Crane**  
M7V Axial Piston Motor



K3VL Axial Piston Pump



**Dumper**  
K3VL Axial Piston Pump



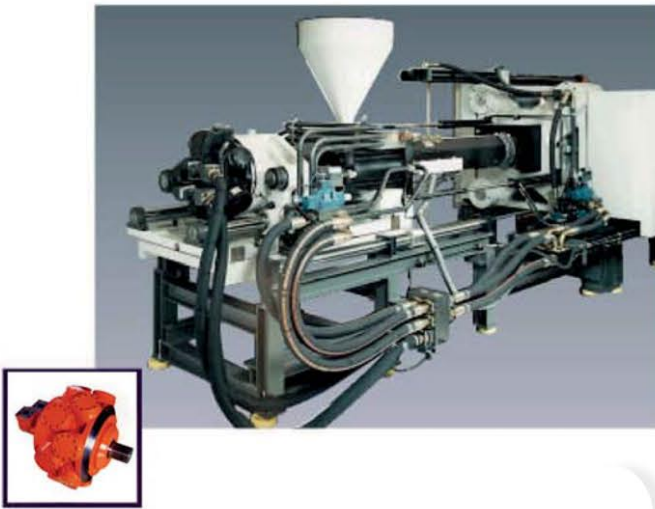


## Applications

### Industrial

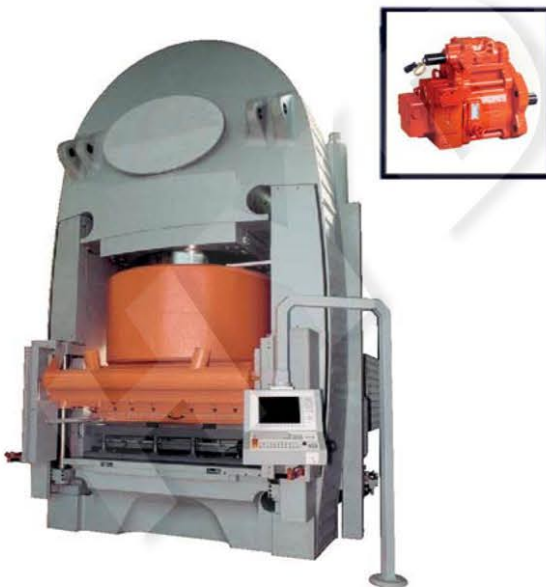
#### Injection Moulding Machine

HMB Radial Piston Motor  
K3VL Axial Piston Pump



#### Injection Moulding Machine

M3X Axial Piston Motor  
K3VL Axial Piston Pump with  
proportional electro-hydraulic control



#### Ceramic Floor Tile Press

K3VL - K3VG Axial Piston Pumps



#### Leather Press

K3VL Axial Piston Pump

# Applications

## Industrial

### Shredders and Crushing Machine

K3VDTH Axial Piston Pump

HMB Radial Piston Motor



### Giant Tunnel boring machine

K3VL Axial Piston Pump

M3X Axial Piston Motor (Multiple)



### Scrap processing press-shearing machine

K3VL Axial Piston Pump

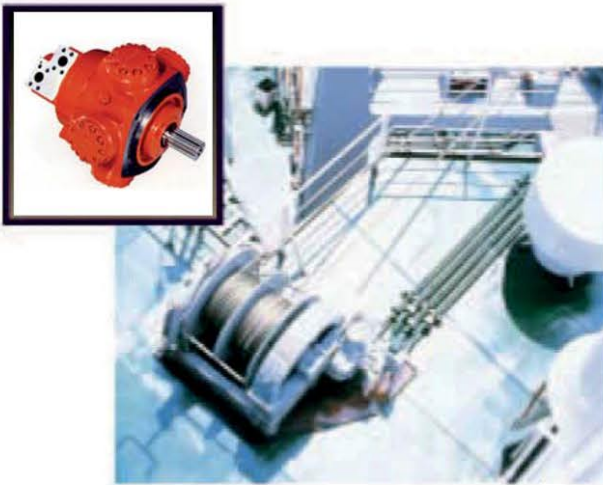


## Applications

### Marine

#### Mooring Winch

HMB - HMC Radial Piston Motors



#### Winch

HMB - HMC Radial Piston Motors



#### Derrick Crane

K3VL - K3VG Axial Piston Pumps  
HMB - HMC Radial Piston Motors



## World Wide Locations

### HANSA-TMP Headquarters

Via M. L. King, 6  
41122 Modena - ITALY  
Tel.: +39 059 41 57 11  
Fax: +39 059 41 57 29/30  
E-mail: [hansatmp@hansatmp.it](mailto:hansatmp@hansatmp.it)  
Web: [www.hansatmp.it](http://www.hansatmp.it)

### HANSA-TMP China

China Sales Office c/o Rundee  
Room 806, No. 88, Sibao Rd,  
Songjiang District  
Zip 201601 Shanghai  
P.R. of China  
Tel.: +86 21 60709280  
Mobile: +86 13916975816  
E-mail: [weiqijin@hansa-tmp.cn](mailto:weiqijin@hansa-tmp.cn)  
Web: [www.hansa-tmp.cn](http://www.hansa-tmp.cn)  
Skype: wei\_qijin

### HANSA-TMP Russia

Moscow Region  
Serpukhov  
1, Soltsa Street.  
Tel.: +7 4967 76 29 73  
Fax: +7 4967 76 06 20  
E-mail: [hansatmprus@gmail.com](mailto:hansatmprus@gmail.com)  
Web: [www.hansa-tmp.ru](http://www.hansa-tmp.ru)

## Partners

### HYDROMA, spol. s.r.o.

Vlcnovská 2477  
688 01 Uherský Brod  
Czech Republic  
Tel./Fax: +420 572 637 796  
Fax: +420 572 637 729  
Mobile: +420 724 149 326  
E-mail: [hydroma@hydroma.cz](mailto:hydroma@hydroma.cz)  
Web: [www.hydroma.cz](http://www.hydroma.cz)

### HYDROMA SK, spol. s.r.o.

Nová 134  
017 01 Povazská Bystrica  
Slovak Republic  
Tel.: +421 424 261 171  
Tel.: +421 424 261 172  
Fax: +421 424 261 170  
E-mail: [hydroma@hydroma.sk](mailto:hydroma@hydroma.sk)  
Web: [www.hydroma.sk](http://www.hydroma.sk)

### HIDROMA SYSTEMS, Sp. z o.o.

ul. Nowopogońska 98  
41-250 Czeladź  
Poland  
Tel./Fax: +48 (32) 24 11 821  
E-mail: [info@hidromasystems.pl](mailto:info@hidromasystems.pl)  
Web: [www.hidromasystems.pl](http://www.hidromasystems.pl)