

Part number:

009-10173a

**HYDROMA**

HYDRAULICKÉ SYSTÉMY

**HIDROMA  
SYSTEMS**

UKŁADY HYDRAULICZNE

**HYDROMA**

ГИДРАВЛИЧЕСКИЕ СИСТЕМЫ

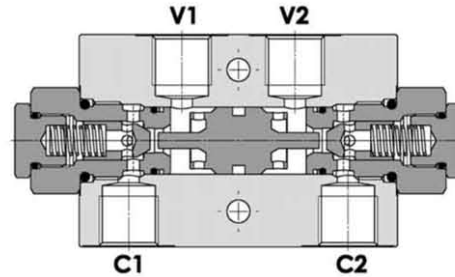
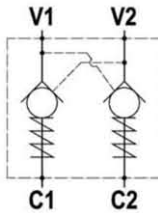
Tipo / Type

**FPD-L.\*.\*.\*.\*.\*.\***

Sez./Section

**F**

**Valvola di blocco pilotata doppia, montaggio in linea**  
**Double pilot operated check valve, line mounted**



**SPECIFICHE TECNICHE**

**Materiali:** corpo in alluminio, a richiesta in acciaio. I componenti interni sono in acciaio trattato termicamente e rettificati.

**Portata max.:** 85 l/min

**Pressione max.:** vedere tabella pag. 02

**Pressione di apertura:** standard 2.5 bar, a richiesta 5-10 bar

**TECHNICAL SPECIFICATIONS**

**Materials:** std body is in aluminium, steel body on request. Internal parts are in hardened and ground steel.

**Rated flow:** 85 l/min

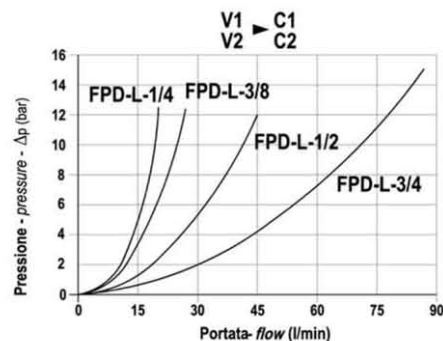
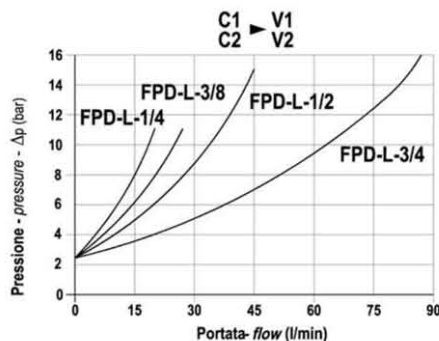
**Max. pressure:** see data sheet page 02

**Cracking pressure:** 2.5 bar standard, 5-10 bar on request

**DIAGRAMMA PERDITE DI CARICO - PRESSURE DROP CURVES**

Viscosità olio 24 mm<sup>2</sup>/sec. (3,5 °E)  
Temperatura 50 °C

Oil viscosity 24 mm<sup>2</sup>/sec. (3,5 °E)  
Temperature 50 °C



Part number:

**009-10173b**

**HYDROMA**

HYDRAULICKÉ SYSTÉMY

**HIDROMA  
SISTEMS**

UKŁADY HYDRAULICZNE

**HYDROMA**

ГИДРАВЛИЧЕСКИЕ СИСТЕМЫ

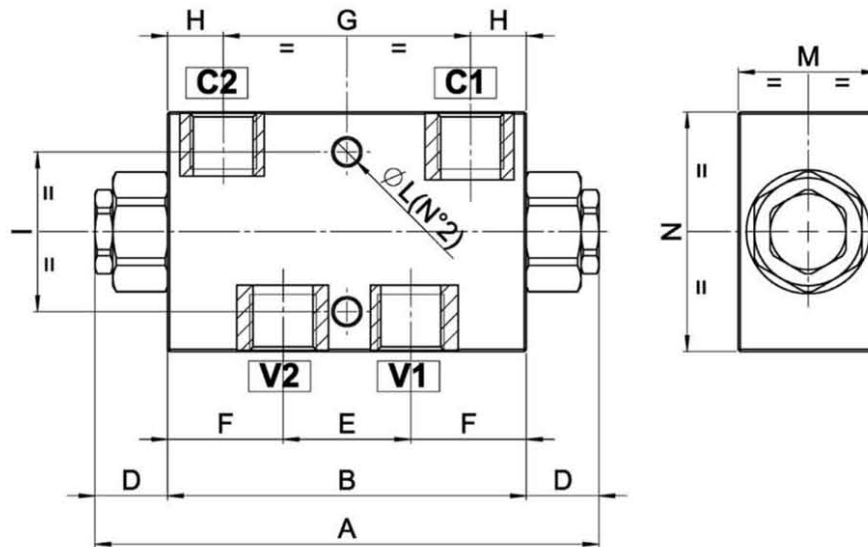
Tipo / Type

**FPD L.\*.\*.\*.\*.\*.\***

Sez./Section

**F**

**Valvola di blocco pilotata doppia, montaggio in linea**  
**Double pilot operated check valve, line mounted**



TIPO TYPE	PORTATA MAX. MAX. FLOW	PRESSIONE MAX. MAX. PRESSURE	V1-C1 V2-C2	A	B	D	E	F	G	H	I	L	M	N	PESO - WEIGHT
	l/min	bar	BSPP	mm	mm	mm	mm	mm	mm	mm	mm	mm	mm	mm	Kg
FPD L 1/4	20	210 - 350(S)	1/4"	126	90	18	34	25.5	60	12.5	40	8.5	30	60	0.625 - 1.300(S)
FPD L 3/8	25	210 - 350(S)	3/8"	127	90	18.5	32	29	62	14	40	6.5	35	60	0.650 - 1.400(S)
FPD L 1/2	45	210 - 350(S)	1/2"	138	110	14.5	34	38	68	21	40	8.5	35	70	0.750 - 1.800(S)
FPD L 3/4	85	210 - 300(S)	3/4"	193	165	14	50	57.5	107	29	60	8.5	50	90	2.300 - 5.200(S)

Queste valvole, data la loro configurazione, non consentono una elevata contropressione allo scarico

These valves, owing to their configuration, can't allow for a high discharge counterpressure

	FPD L 1/4	FPD L 3/8	FPD L 1/2	FPD L 3/4
Rapporto di pilotaggio - Pilot ratio	1 : 4	1 : 7 (1 : 4 - New!)	1 : 3.5	1 : 4

(S) = CORPO IN ACCIAIO - (S) = STEEL BODY

**ESEMPIO DI ORDINAZIONE - ORDERING CODE EXAMPLE**

**F P D L 1 / 2 2 , 5 G B \* \***

Codice base  
Basic code

1/4 = 1/4" BSPP  
3/8 = 3/8" BSPP  
**1/2 = 1/2" BSPP**  
3/4 = 3/4" BSPP

Connessioni corpo - port sizes \*

Pressione apertura ritengo - cracking pressure  
Omettere se 2.5 bar - omit if 2.5 bar

**Indicare se 5 / 10 bar - specify if 5 / 10 bar \***

Guarnizioni - seals  
Omettere se BUNA-N - omit if BUNA-N  
\* V = Viton

Materiale corpo: omettere se alluminio, S=acciaio  
\* Body material: omit if aluminium, S=steel

Omettere se standard - omit if standard  
Indicare per FPD L 3/8 R.PIL.: 1:4  
\* Specify for FPD L 3/8 R.PIL.: 1:4

Guarnizione sul pilota, omettere se non richiesta  
\* Seal on pilot valve, omit if not requested