

Part number:

**HYDROMA**

HYDRAULICKÉ SYSTÉMY

**HIDROMA  
SISTEMS**

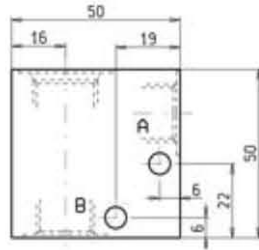
UKŁADY HYDRAULICZNE

**HYDROMA**

ГИДРАВЛИЧЕСКИЕ СИСТЕМЫ

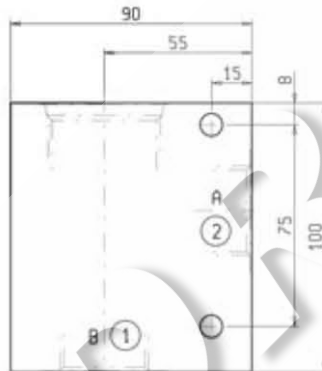
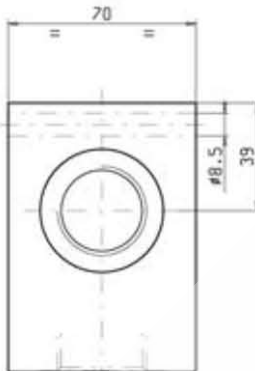
**MANIFOLDS**

**2 WAY STEEL**



CAVITY **019-E**  
Dimensions on page 7.01.12

ORDERING CODE	PORTS A - B	WEIGHT Kg
OC.10.09.102	G 1/4	0.450
OC.10.09.101	G 3/8	0.450



CAVITY **004**  
Dimensions on page 1.11.96

ORDERING CODE	PORTS A - B	WEIGHT Kg
OC.10.09.122	G 1	3.500
OC.10.09.056	G 1-1/4	3.500

**MAX. PRESSURE** 350 bar

**FEATURES**

- These manifolds can be supplied upon request for working pressures up to 350 bar and for fatigue cycle applications.