

Part number:

009-10120a

HYDROMA

HYDRAULICKÉ SYSTÉMY

**HIDROMA
SYSTEMS**

UKŁADY HYDRAULICZNE

HYDROMA

ГИДРАВЛИЧЕСКИЕ СИСТЕМЫ

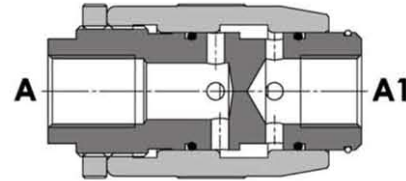
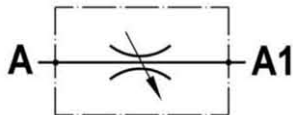
Tipo / Type

FPMB- *- *

Sez / Section

L

Valvola regolatrice di flusso bidirezionale, tipo a manicotto
Needle valve, barrel type



SPECIFICHE TECNICHE

Materiali: corpo e parti interne in acciaio. La superficie esterna è protetta mediante zincatura.

Portata max.: 150 l/min

Pressione max.: 350 bar, vedasi tabella a parte

TECHNICAL SPECIFICATIONS

Materials: body and internal parts are steel made. External surface zinc plated.

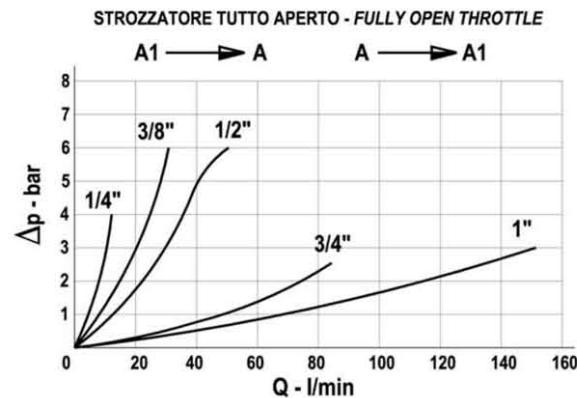
Rated flow: 150 l/min

Max. pressure: 350 bar, see data sheet

DIAGRAMMA PERDITE DI CARICO - PRESSURE DROP CURVES

Viscosità olio 24 mm²/sec. (3,5 °E)
Temperatura 50 °C

Oil viscosity 24 mm²/sec. (3,5 °E)
Temperature 50 °C



Part number:

009-10120b

HYDROMA

HYDRAULICKÉ SYSTÉMY

**HIDROMA
SISTEMS**

UKŁADY HYDRAULICZNE

HYDROMA

ГИДРАВЛИЧЕСКИЕ СИСТЕМЫ

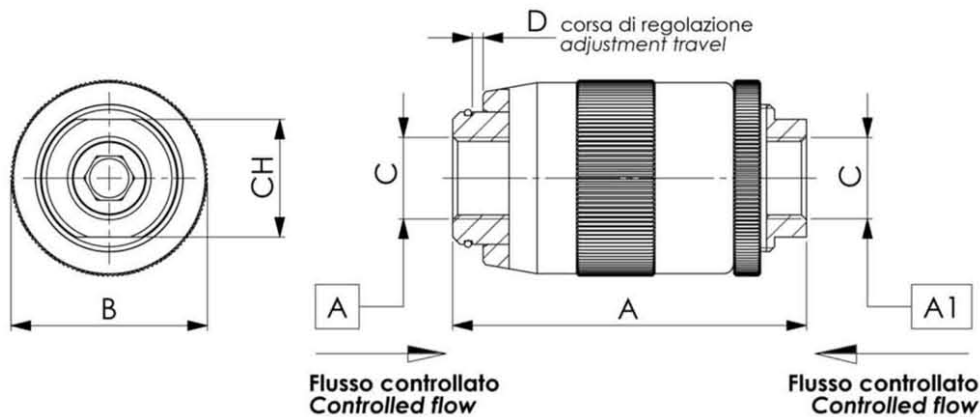
Tipo / Type

FPMB-*.*

Sez / Section

L

Valvola regolatrice di flusso bidirezionale, tipo a manicotto
Needle valve, barrel type



TIPO TYPE	PORTATA MAX. MAX. FLOW	PRESSIONE MAX. MAX. PRESSURE	A	B	C	D	CH	PESO WEIGHT
	l/min	bar	mm	mm	BSPP	mm	mm	Kg
FPMU 1/4	12	350	62	34	1/4"	4.5	19	0.275
FPMU 3/8	30	350	72	40	3/8"	5.5	24	0.430
FPMU 1/2	45	310	80	46	1/2"	7	30	0.630
FPMU 3/4	85	280	100	54	3/4"	10	36	1.050
FPMU 1	150	250	125	65	1"	12	41	1.960

ESEMPIO DI ORDINAZIONE – ORDERING CODE EXAMPLE

