

Part number:

009-10172a

HYDROMA

HYDRAULICKÉ SYSTÉMY

**HIDROMA
SYSTEMS**

UKŁADY HYDRAULICZNE

HYDROMA

ГИДРАВЛИЧЕСКИЕ СИСТЕМЫ

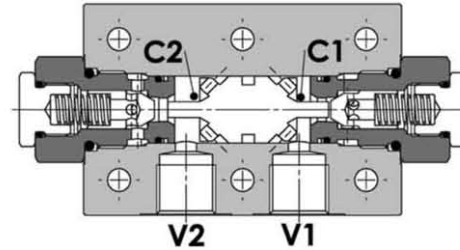
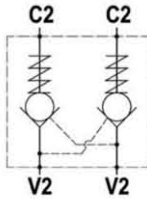
Tipo / Type

FPD F-*.~*.~*.~*.~*

Sez./Section

F

Valvola di blocco pilotata doppia, montaggio a flangia
Double pilot operated check valve, gasket mounted



SPECIFICHE TECNICHE

Materiali: corpo in alluminio, a richiesta in acciaio. I componenti interni sono in acciaio trattato termicamente e rettificati.

Portata max.: 85 l/min

Pressione max.: vedere tabella pag. 02

Pressione di apertura: standard 2,5 bar, a richiesta 5-10 bar

TECHNICAL SPECIFICATIONS

Materials: std body is in aluminium, steel body on request. Internal parts are in hardened and ground steel.

Rated flow: 85 l/min

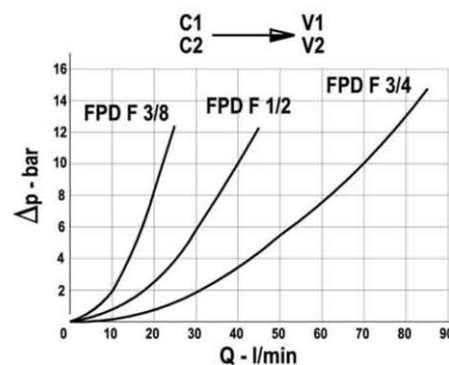
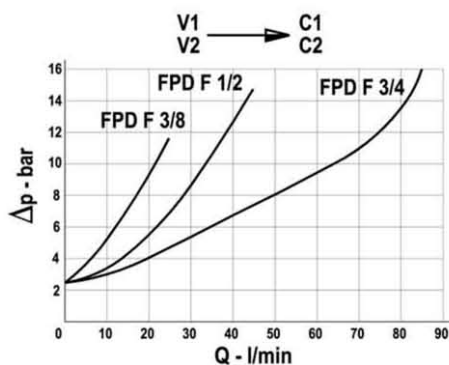
Max. pressure: see data sheet page 02

Cracking pressure: 2.5 bar standard, 5-10 bar on request

DIAGRAMMA PERDITE DI CARICO - PRESSURE DROP CURVES

Viscosità olio 24 mm²/sec. (3,5 °E)
Temperatura 50 °C

Oil viscosity 24 mm²/sec. (3,5 °E)
Temperature 50 °C



Part number:

009-10172b

HYDROMA

HYDRAULICKÉ SYSTÉMY

**HIDROMA
SISTEMS**

UKŁADY HYDRAULICZNE

HYDROMA

ГИДРАВЛИЧЕСКИЕ СИСТЕМЫ

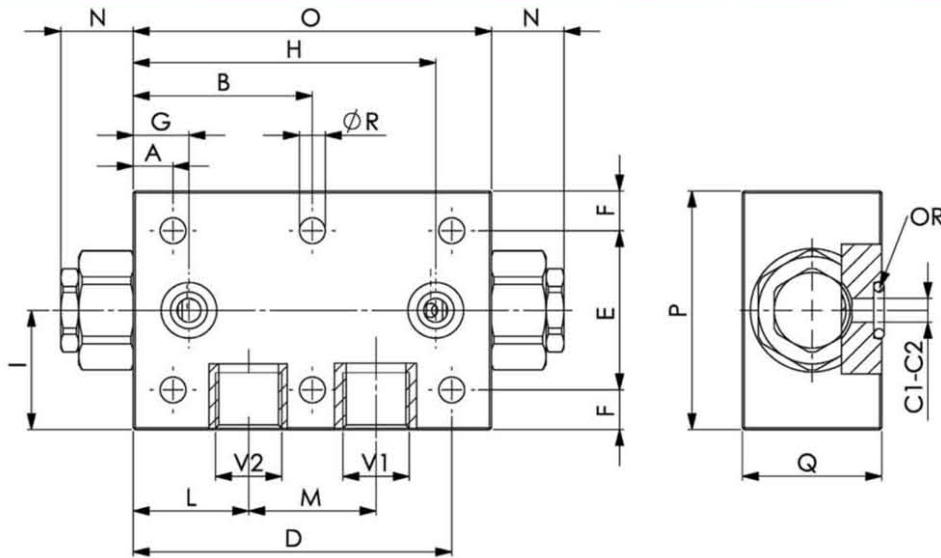
Tipo/Type

FPD F--**-****

Sez./Section

F

Valvola di blocco pilotata doppia, montaggio a flangia
Double pilot operated check valve, gasket mounted



TIPO TYPE	PORTATA MAX. FLOW	PRESSIONE MAX. - MAX. PRESSURE (S=CORPO IN ACCIAIO, S=STEEL BODY)	V1 V2	C1 C2	A	B	D	E	F	G	H	I	L	M	N	O	P	Q	R	PESO WEIGHT Kg
	l/min	bar	BSPP	mm	mm	mm	mm	mm	mm	mm	mm	mm	mm	mm	mm	mm	mm	mm	mm	
FPD F 3/8	30	210 - 350 (S)	3/8"	6	10	45	80	40	10	14	76	30	29	32	18.5	90	60	34.5	6.5	0.650
FPD F 1/2	45	210 - 350 (S)	1/2"	8	15	55	95	40	15	22.5	87.5	35	38	34	14.5	110	70	34.5	8.5	0.750
FPD F 3/4	85	210 - 300 (S)	3/4"	14	15	82.5	150	50	20	30	135	45	57.5	50	14	165	90	49.5	10.5	2.300

Queste valvole, data la loro configurazione, non consentono una elevata contropressione allo scarico
These valves, owing to their configuration - can't allow for a high discharge counterpressure

	FPD F 3/8	FPD F 1/2	FPD F 3/4
Rapporto di pilotaggio - Pilot ratio	1 : 7	1 : 3.5	1 : 4
Guarnizioni OR - Seals O-ring	9,19x2,62	15,54x2,62	18,64x3,53

ESEMPIO DI ORDINAZIONE - ORDERING CODE EXAMPLE

FPD F 3/8 2,5 G * *

Codice base
Basic code

Connessioni
Port sizes

3/8 - 3/8" BSPP
1/2 - 1/2" BSPP
3/4 - 3/4" BSPP *

Pressione apertura ritegno - Cracking pressure
Omettere se 2,5 bar
Indicare se 5 - 10 bar
Omit if 2,5 bar
Specify if 5 - 10 bar *

Guarnizioni - Seals
Omettere se BUNA-N
Omit if BUNA-N
* V=Viton

Materiale corpo: omettere se alluminio,
S=acciaio
Body material: omit if aluminium,
* S=steel

Con guarnizione sul pilota
With seal on pilot valve
Omettere se non richiesta
* Omit if not request